



SIPMA S.A.
ul. Budowlana 26
20-469 Lublin, Poland
tel. (+48) 81 74 45 071
www.sipma.pl

SIPMA OS 7521 MIRA BALE WRAPPER



PARTS CATALOGUE

3rd Edition 2012

How to Use the Catalogue

The Catalogue contains component drawings and tables with listings of assembly parts.

The Catalogue should be used as follows:

1. Check the information given in the equipment sheet in the Instruction Manual – it helps determine the sizes of certain parts.
2. Determine in which unit the needed part is located;
3. Find the relevant drawing of the unit and the relevant unit in it;
4. Using the part number on the drawing as a guide, find the relevant drawing or standard number in the table, name of the part and quantity.

Ordering Spare Parts

Spare parts can be purchased:

1. In the SIPMA S.A. online shop (<http://sklep.sipma.pl>) – its advantage is the exact location of parts, anytime access and the shortest delivery time;
2. Directly from the manufacturer;
3. Directly from the machine supplier.

While ordering spare parts, the following need to be specified each time:

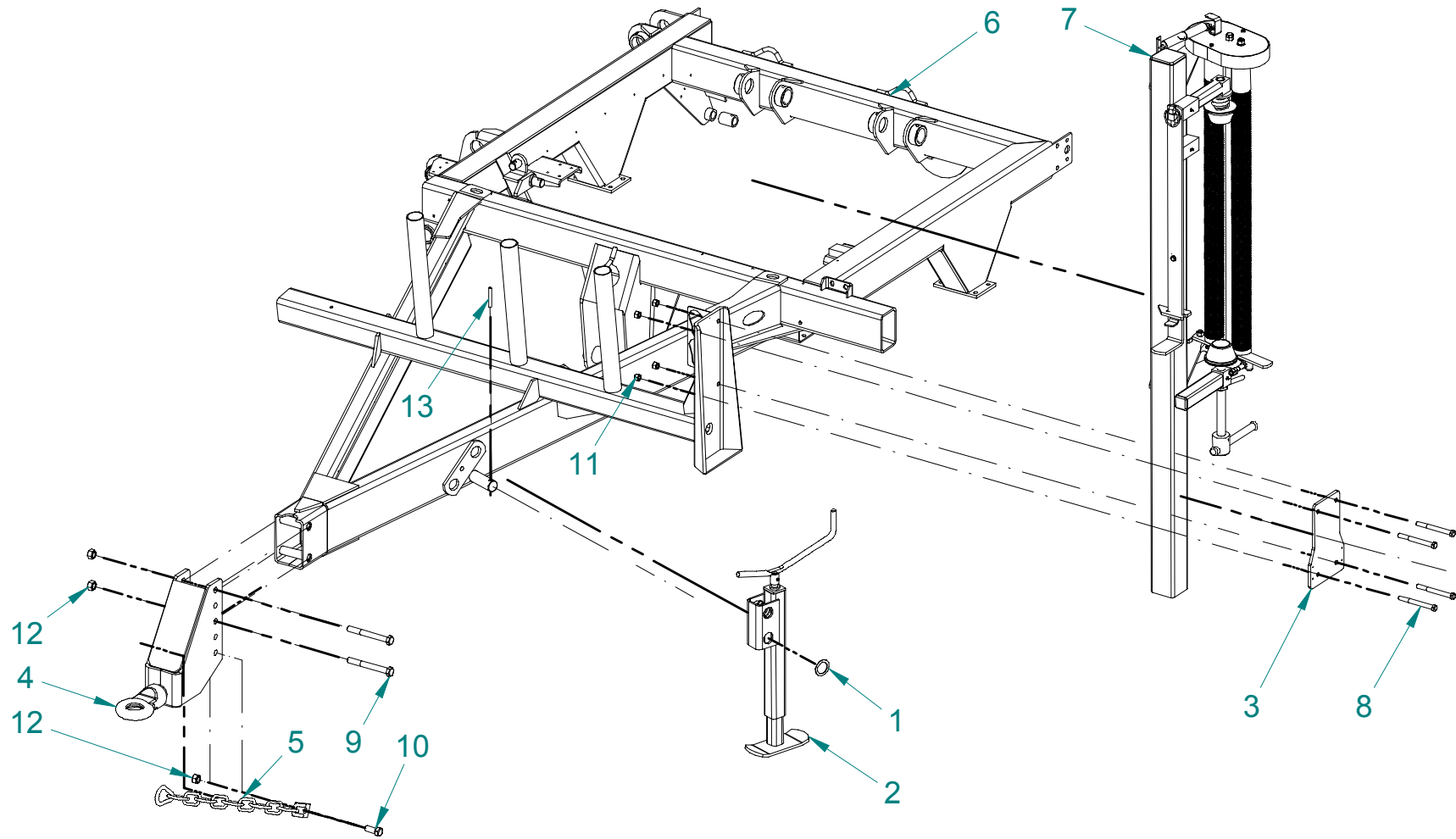
- detailed address of the ordering party;
- machine identification number;
- exact drawing number of the spare part with its name and required quantity.

Only original spare parts can guarantee perfect matching of components and long, maintenance-free operation.

List of Tables

Table 1	Wrapper assy. 5585-000-000.00 (Frame, feeding device)	5
Table 2	Wrapper assy. 5585-000-000.00 (Rotary frame, ejector assy.)	7
Table 3	Wrapper assy. 5585-000-000.00 (Loading arm, axle assy.)	9
Table 4	Wrapper assy. 5585-000-000.00 (Light brackets, ballast, arm sensor)	11
Table 5	Universal film feeder 3600-080-500.10	14
Table 6	Feeding unit assy. 5281-080-740.10	17
Table 7	Hitch assy. 3600-090-530.00	17
Table 8	Rotary frame with swivelling frame 3600-030-600.10	19
Table 9	Rotary frame assy. 3600-030-500.11	22
Table 10	Retaining cone 3600-030-570.10	26
Table 11	Tensioner 3600-030-680.00	26
Table 12	Sensor unit 5585-020-510.00	28
Table 13	Ejector assy. 5585-040-500.00	30
Table 14	Loading arm assy. 5585-050-500.00	33
Table 15	Leg assy. 3-0345-201-500.01	35
Table 16	Axle assy. 1850 3600-060-500.10	35
Table 17	Electrical installation assy. 5585-071-500.00	37
Table 18	Painting 5585-072-500.01 (Frontal view)	39
Table 19	Painting 5585-072-500.01 (Rear view)	40
Table 20	Painting 5585-072-500.01 (Left side view)	42
Table 21	Painting 5585-072-500.01 (Right side view)	44
Table 22	Hydraulic installation 5585-073-500.00	46
Table 23	Hydraulic installation 5585-073-500.00	47

Table 1 Wrapper assy. 5585-000-000.00 (Frame, feeding device)

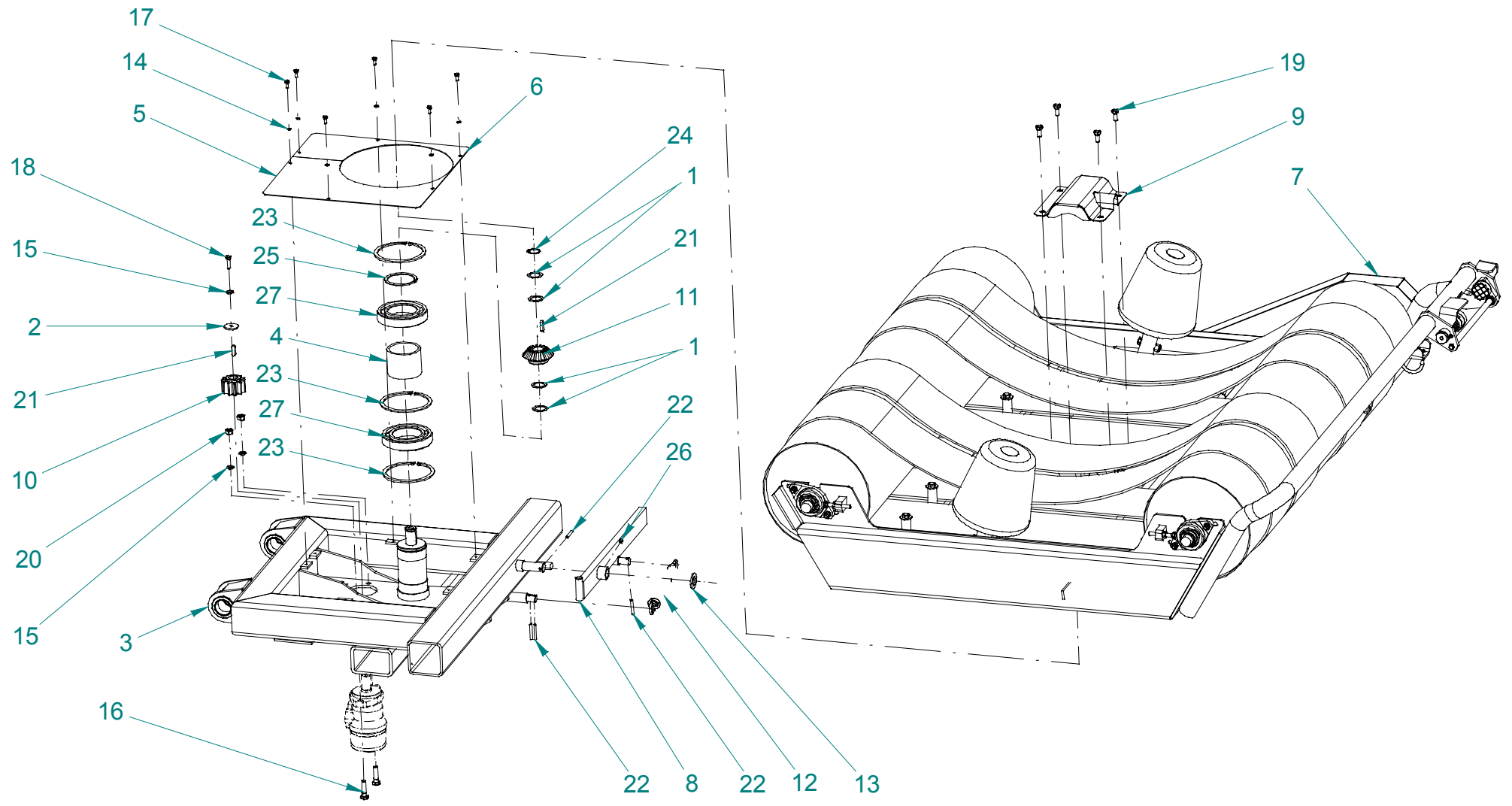


Wrapper assy. 5585-000-000.00 (Frame, feeding device)

Błąd! Nie można odnaleźć źródła odwołania.

No. in the Drawing	No. of Drawing or Norm	Part Name	Qty	Notes
1	3600-090-520.00	Hitch, welded	1	
2	5270-010-150.00	Ring hitch	1	
3	5270-010-157.00	Special nut	1	
4	PN-M-82001	Cotter pin S-Zn 5x71	1	

Table 2 Rotary frame with swivelling frame 3600-030-600.10



Rotary frame with swivelling frame 3600-030-600.10

Table 2

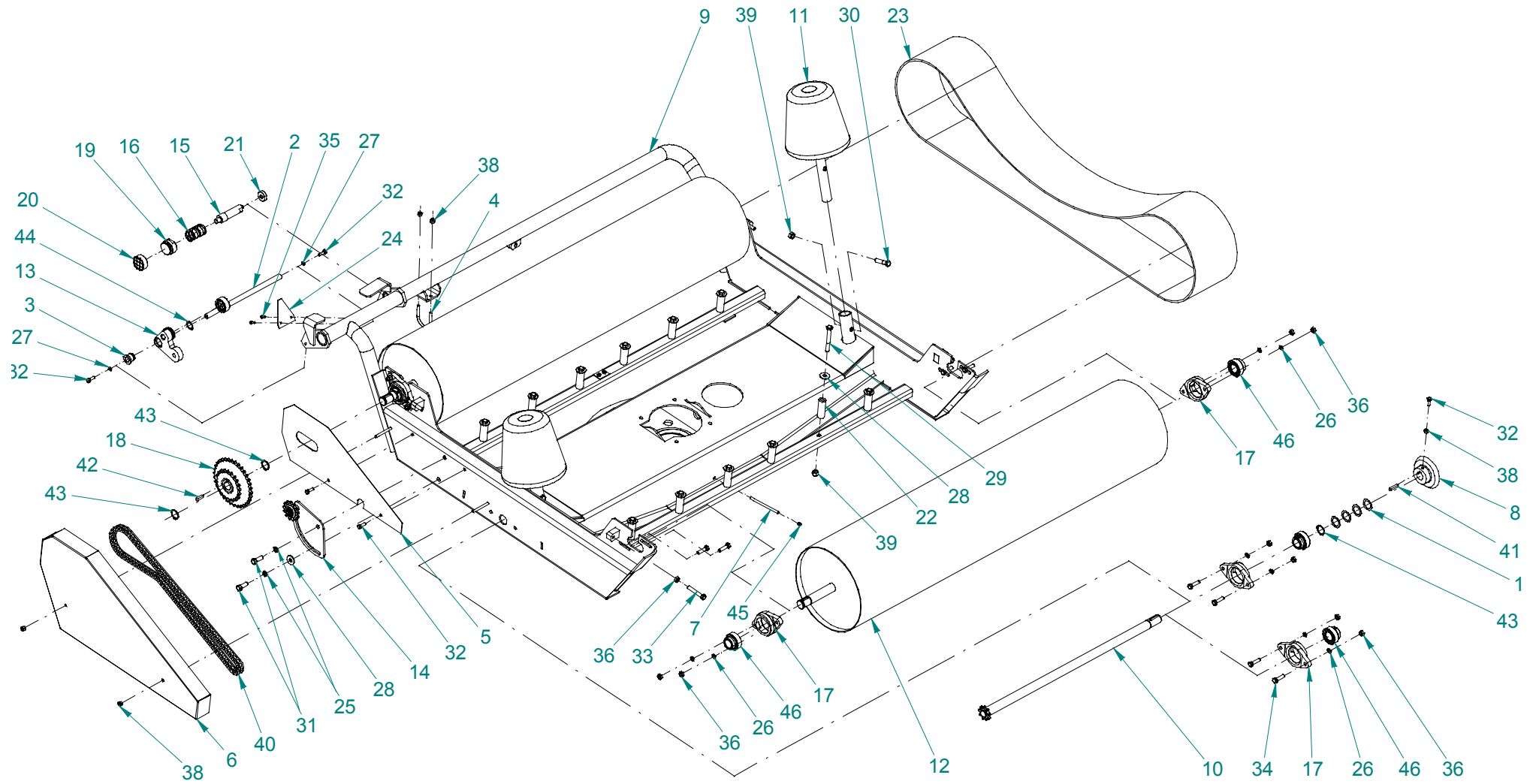
No. in the Drawing	No. of Drawing or Norm	Part Name	Qty	Notes
1	089-000712-0.273	Washer	4	
2	1600-020-123.00	Washer 9x40x4	1	
3	3600-020-800.10	Swivelling frame assy.	1	
4	3600-030-120.10	Spacer sleeve	1	
5	3600-030-199.00	Cover	1	
6	3600-030-200.00	Cover	1	
7	3600-030-500.11	Swivelling frame assy.	1	Table 3
8	3600-030-640.00	Flat bar, welded	1	
9	3600-030-670.00	Cover	1	
10	5281-040-101.00	Sprocket z=11	1	
11	5281-040-414.00	Bevel gear z=17	1	
12	5571-300-182.00	Blade spring	1	
13	PN-M-82005	Washer 25 Fe/Zn8	1	
14	PN-M-82008	Spring washer Z 6.1 Fe/Zn8	6	
15	PN-M-82008	Spring washer Z 12.2 Fe/Zn8	3	
16	PN-M-82101	Screw M12 x 40-8.8-B Fe-Zn8	2	
17	PN-M-82105	Screw M6 x 16-8.8-B-Fe/Zn8	6	
18	PN-M-82105	Screw M8 x 30-8.8-B-Fe-Zn8	1	
19	PN-M-82105	Screw M10 x 25-8.8-B-Fe/Zn8	4	
20	PN-M-82144	Nut M12-8-B Fe/Zn8	2	

Rotary frame with swivelling frame 3600-030-600.10

Table 2

21	PN-M-85005	Prismatic inlet A8x7x30	2	
22	PN-M-85023	Spring pin 6 x 45	4	
23	PN-M-85111	Circlip W 90	3	
24	PN-M-85111	Circlip Z 30	1	
25	PN-M-85111	Circlip Z 90	1	
26	PN-M-86002	Grease nipple StM6x1	1	
27	PN-M-86100	Bearing 6216 RS	2	

Table 3 Rotary frame assy. 3600-030-500.11



Rotary frame assy. 3600-030-500.11

Table 3

No. in the Drawing	No. of Drawing or Norm	Part Name	Qty	Notes
1	089-000712-0.273	Washer	4	
2	3600-030-171.00	Rod	1	
3	3600-030-174.00	Sleeve	1	
4	3600-030-177.00	Holder	1	
5	3600-030-192.00	Metal plate	1	
6	3600-030-193.00	Metal plate	1	
7	3600-030-197.00	Tube	1	
8	3600-030-204.00	Bevel-wheel	1	
9	3600-030-510.20	Rotary frame, welded	1	
10	3600-030-540.20	Drive shaft	1	
11	3600-030-570.10	Retaining cone	2	Table 4
12	3600-030-590.10	Welded cylinder	2	
13	3600-030-660.10	Puck	1	
14	3600-030-680.00	Tensioner	1	Table 5
15	3600-070-101.10	Bolt	1	
16	3600-070-121.00	Spring	1	
17	5261-010-001.00	Bearing retainer	6	
18	5281-040-580.20	Chain wheel z=21/35 5/8"	1	
19	5281-080-191.00	Gripper disk	1	
20	5281-080-192.00	Rubber cover	2	

Rotary frame assy. 3600-030-500.11

Table 3

21	5281-080-194.00	Thrust disk	1	
22	5584-030-203.00	Sleeve	12	
23	5584-030-210.02	Belt	4	
24	G 80	Blade	1	
25	PN-M-82008	Spring washer Z 12.2 Fe/Zn8	2	
26	PN-M-82008	Spring washer Z 10.2 Fe/Zn8	12	
27	PN-M-82008	Spring washer Z 8.2 Fe/Zn8	2	
28	PN-M-82030	Round washer 13 Fe/Zn8	13	
29	PN-M-82101	Screw M12 x 90-8.8-B-Fe/Zn8	12	
30	PN-M-82101	Screw M12 x 55-8.8-B-Fe/Zn8	2	
31	PN-M-82101	Screw M12 x 35-8.8-B-Fe-Zn8	2	
32	PN-M-82105	Screw M 8 x 25-8.8-B Fe-Zn8	5	
33	PN-M-82105	Screw M10 x 45-8.8-B-Fe/Zn8	4	
34	PN-M-82105	Screw M10 x 40-8.8-B Fe-Zn8	12	
35	PN-M-82105	Screw M5 x 16-8.8-B-Fe/Zn8	2	
36	PN-M-82144	Nut M10-8-B-Fe/Zn8	16	
37	PN-M-82144	Nut M5-8-B-Fe/Zn8	2	
38	PN-M-82175	Self-locking nut M8-8-B Fe/Zn8	5	
39	PN-M-82175	Self-locking nut M12-8-B Fe/Zn8	14	
40	PN-M-84168	Chain 10B-90 PZ-wzm	1	
41	PN-M-85005	Prismatic inlet A8x7x40	1	
42	PN-M-85005	Prismatic inlet A8x7x30	1	

Rotary frame assy. 3600-030-500.11

Table 3

43	PN-M-85111	Circlip Z 30	3	
44	PN-M-85111	Circlip Z 25	1	
45	PN-M-86002	Grease nipple StM6x1	2	
46	PN-M-86120	Self-aligning bearing D 206	6	

Table 4 Retaining cone 3600-030-570.10

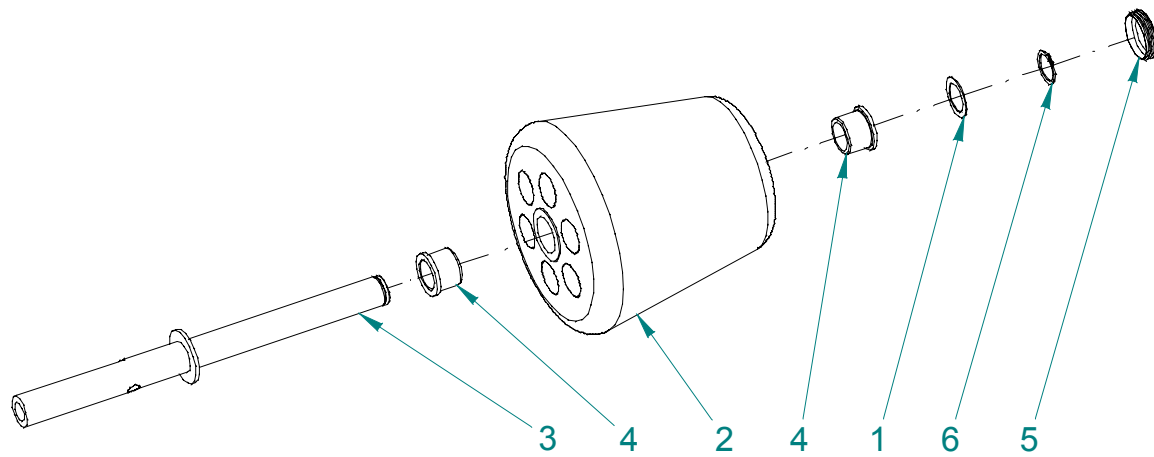
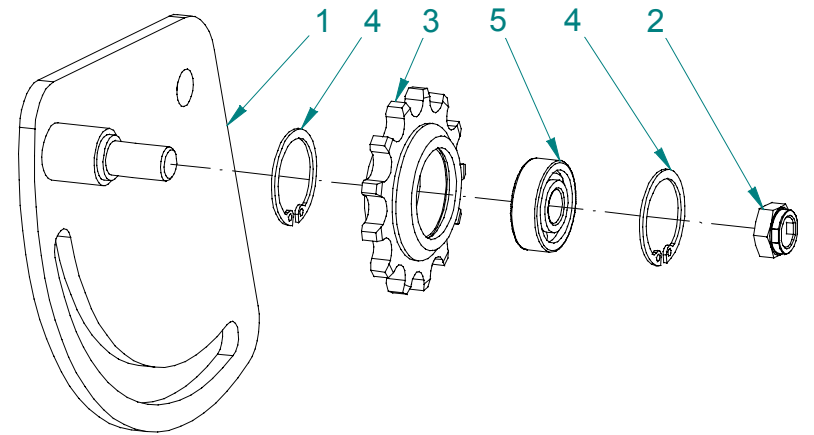


Table 5 Tensioner 3600-030-680.00



Retaining cone 3600-030-570.10

Table 4

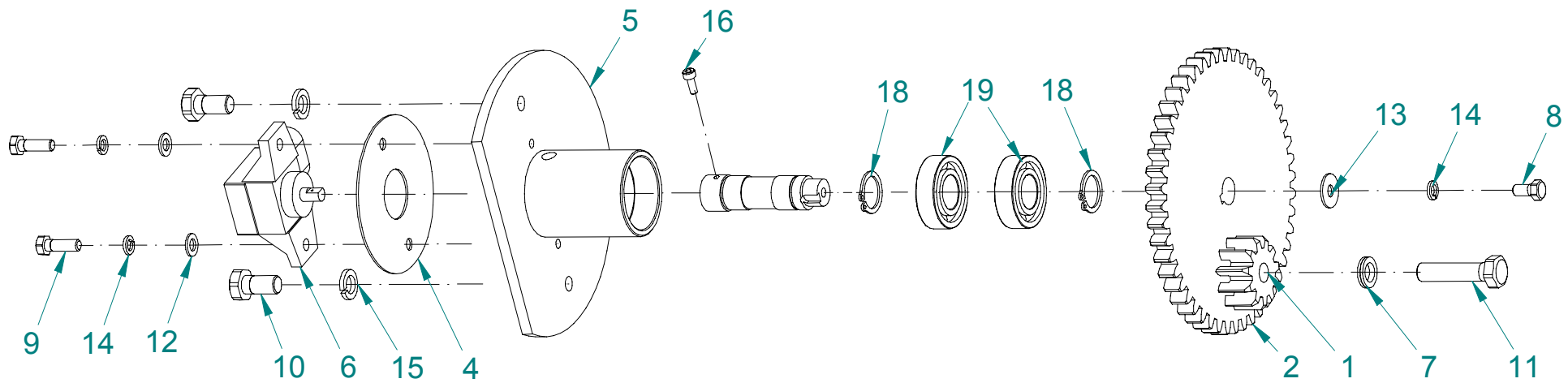
No. in the Drawing	No. of Drawing or Norm	Part Name	Qty	Notes
1	089-000712-0.273	Washer	1	
2	3600-030-135.10	Retaining cone	1	
3	3600-030-580.10	Wheel support	1	
4	5223-130-203.00	Sleeve	2	
5	SR 1560 - 460791	Pipe insert	1	
6	PN-M-85111	Circlip Z 30	1	

Tensioner 3600-030-680.00

Table 5

No. in the Drawing	No. of Drawing or Norm	Part Name	Qty	Notes
1	3600-030-690.00	Tensioner, welded	1	
2	5270-100-141.00	Guide beam nut	1	
3	E-2010-130-012.01	Guiding toothed pulley	1	
4	PN-M-85111	Circlip W 32	2	
5	PN-M-86100	Bearing 6201-2RS	1	

Table 6 Sensor unit 5585-020-510.00

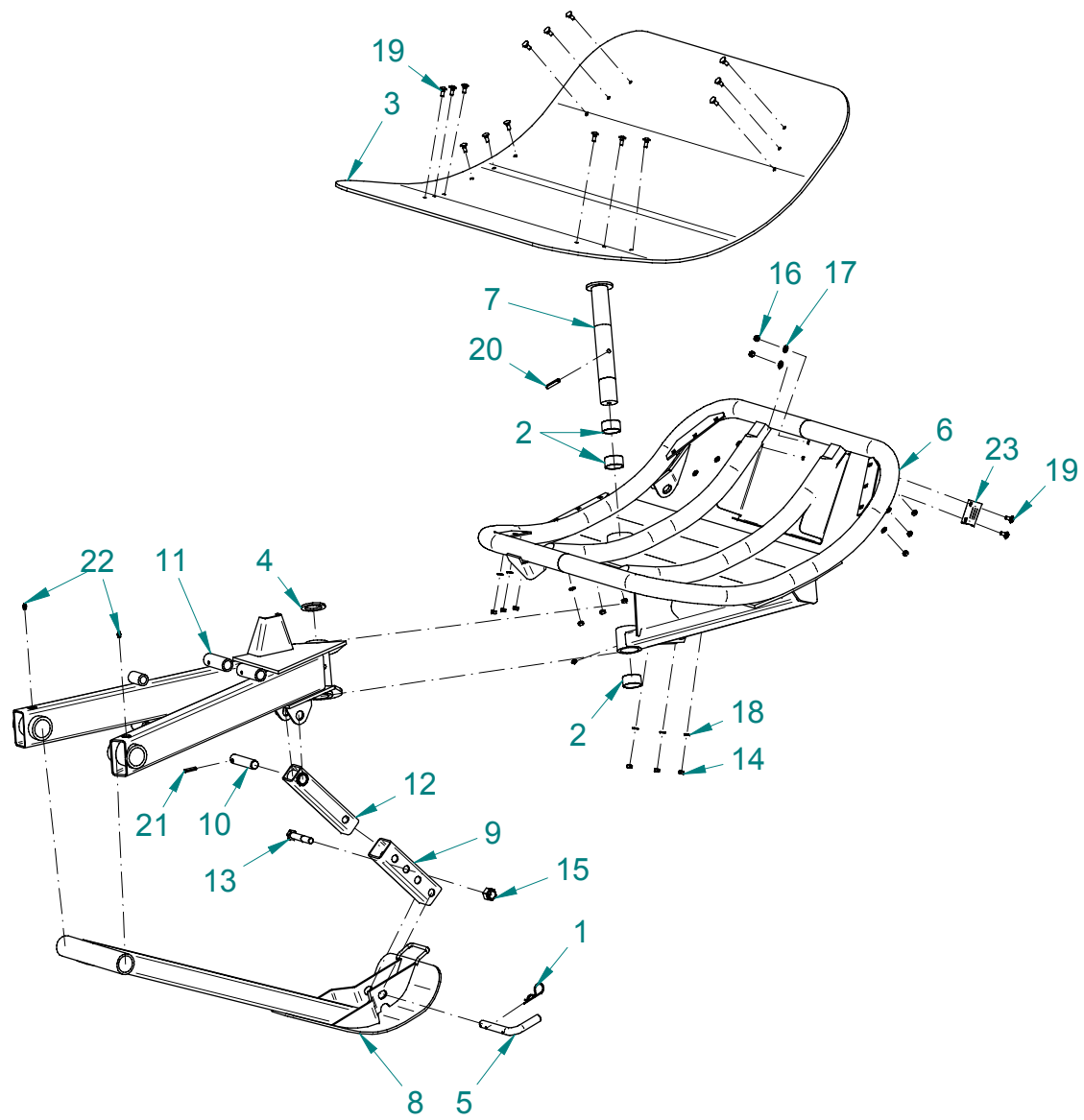


Sensor unit 5585-020-510.00

Table 6

No. in the Drawing	No. of Drawing or Norm	Part Name	Qty	Notes
1	5585-020-100.00	Wheel z=11 m=2.5	1	
2	5585-020-101.00	Wheel z=48 m=2.5	1	
3	5585-020-102.00	Mandrel	1	
4	5585-020-104.00	Washer	1	
5	5585-020-520.00	Welded sleeve	1	
6	5585-074-600.00	Rotation sensor	1	
7	0653-184-009ZN	Standard washer NL 8	1	
8	PN-EN ISO 4017	Screw M 5 x 10 - 8.8 - R3J	1	
9	PN-EN ISO 4017	Screw M 5 x 16 - 8.8 - R3J	2	
10	PN-EN ISO 4017	Screw M 8 x 16 - 8.8 - R3J	2	
11	PN-EN ISO 4017	Screw M 8 x 35 - 8.8 - A3L	1	
12	PN-EN ISO 7091	Washer – 5 - R3J	2	
13	PN-EN ISO 7093-1	Washer – 5 - R3J	1	
14	PN-M-82008	Spring washer Z 5.1 R3J	3	
15	PN-M-82008	Spring washer Z 8.2 R3J	2	
16	PN-M-82302	Screw M 3x8-5.8-B A3L	1	
17	PN-M-85005	Prismatic inlet A4x4x8	1	
18	PN-M-85111	Circlip Z 15	2	
19	PN-M-86100	Bearing 6002-2RS	2	

Table 7 Ejector assy. 5585-040-500.00



Ejector assy. 5585-040-500.00

Table 7

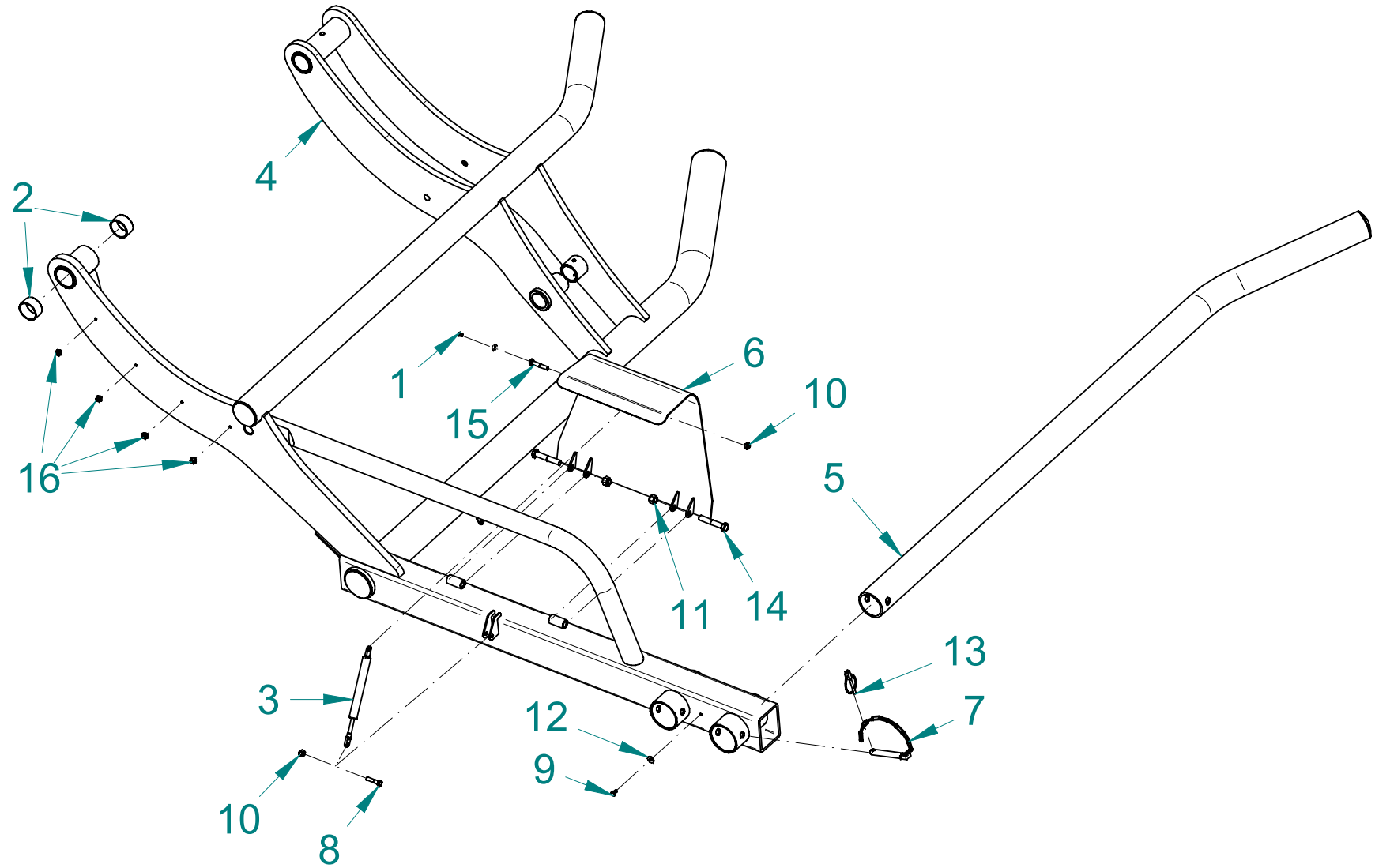
No. in the Drawing	No. of Drawing or Norm	Part Name	Qty	Notes
1	089-000992-0.091	Cotter pin	1	
2	3600-000-100.00	Slide bearing	3	
3	3600-040-122.20	Rubber	1	
4	3600-040-153.00	Slip ring	1	
5	3600-040-162.00	Retaining bolt	1	
6	3600-040-510.11	Ejector arm	1	
7	3600-040-530.00	Bolt, weld.	1	
8	3600-040-570.00	Skid	1	
9	5585-040-102.00	Outer profile	1	
10	5585-040-105.00	Bolt	1	
11	5585-040-520.00	Ejector frame	1	
12	5585-040-530.00	Welded profile	1	
13	PN-EN ISO 4014	Screw M16 x 90 - 8.8 R3J	1	
14	PN-EN ISO 4032	Nut M 8 - 8 - R3J	15	
15	PN-EN ISO 7040	Self-locking nut M20 - 8 - A3L	1	
16	PN-EN ISO 7040	Self-locking nut M8 - 8 - R3J	2	
17	PN-EN ISO 7091	Washer 10 - R3J	2	
18	PN-EN ISO 7091	Washer 8 - R3J	15	
19	PN-M-82406	Screw M8 x 20-8.8-B-R3J	17	
20	PN-M-85023	Spring pin 10 x 65	1	

Ejector assy. 5585-040-500.00

Table 7

21	PN-M-85023	Spring pin 8 x 35	1	
22	PN-M-86002	Grease nipple StM8x1	4	
23	PN-S-73103	Triangle holder	1	

Table 8 Loading arm assy. 5585-050-500.00



Loading arm assy. 5585-050-500.00

Table 8

No. in the Drawing	No. of Drawing or Norm	Part Name	Qty	Notes
1	0653-512-096ZN	Screw H M 5x8-8.8-B Fe-Zn8	1	
2	3600-000-100.00	Slide bearing	2	
3	5270-150-700.00	Gas spring	1	
4	5585-050-510.10	Loading arm, welded	1	
5	5585-050-520.00	Adjustable pipe, welded	1	
6	5585-050-530.00	Rollover sensor	1	
7	7150-040-520.00	Bolt assy.	1	
8	PN-EN ISO 4014	Screw M 8 x 35 - 8.8 - R3J	1	
9	PN-EN ISO 4017	Screw M 6 x 10 - 8.8 - R3J	1	
10	PN-EN ISO 7040	Self-locking nut M8 - 8 - R3J	2	
11	PN-EN ISO 7040	Self-locking nut M12 - 8 - R3J	2	
12	PN-EN ISO 7093-1	Washer 6 - R3J	1	
13	PN-ISO 7072	Cotter pin 6 – R3J	1	
14	PN-M-82101	Screw M12 x 70-8.8-B-Fe/Zn8	2	
15	PN-M-82101	Screw M8 x 45-8.8-B-Fe/Zn8	1	
16	SR 1720 - 462716	Band holder	4	

Table 9 Leg assy. 3-0345-201-500.01

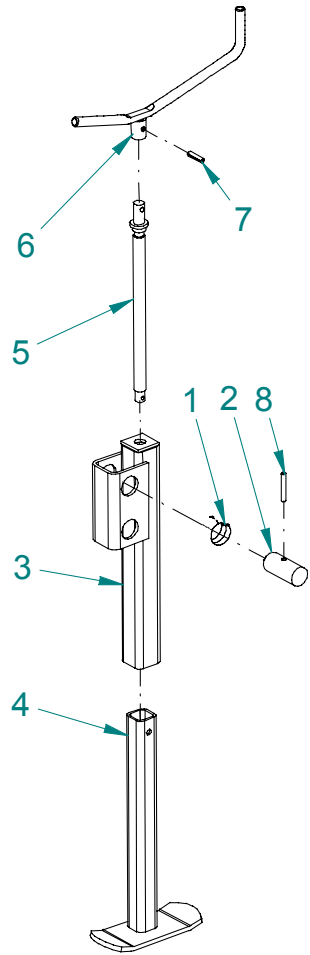
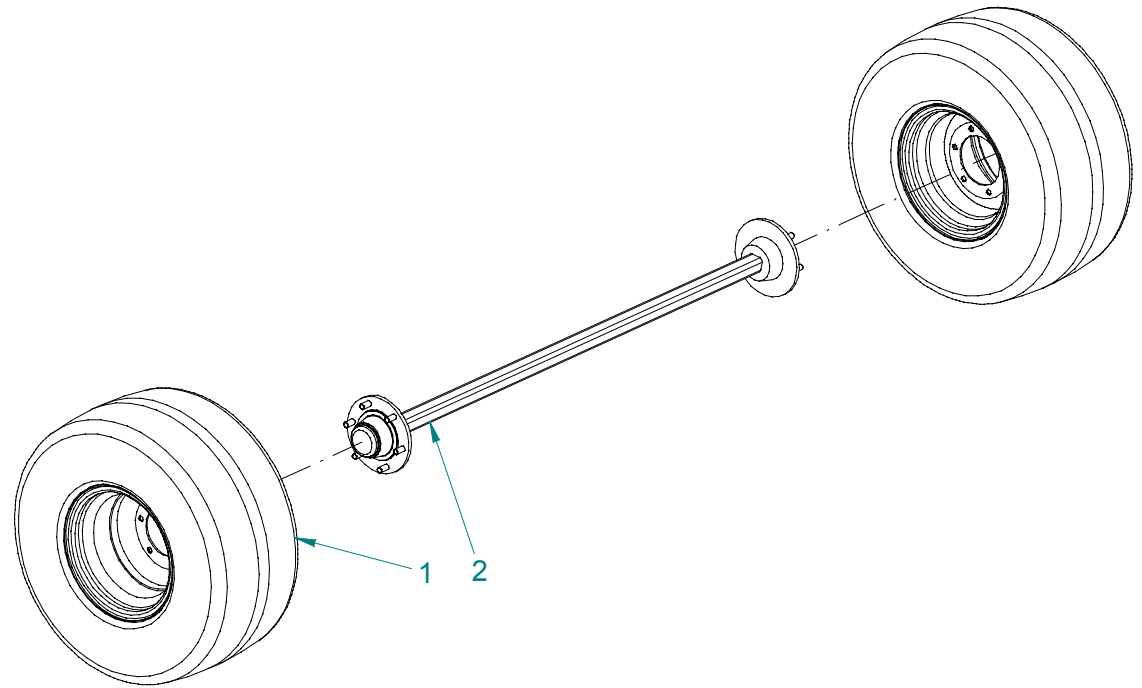


Table 10 Axle assy. 1850 3600-060-500.10



Leg assy. 3-0345-201-500.01

Table 9

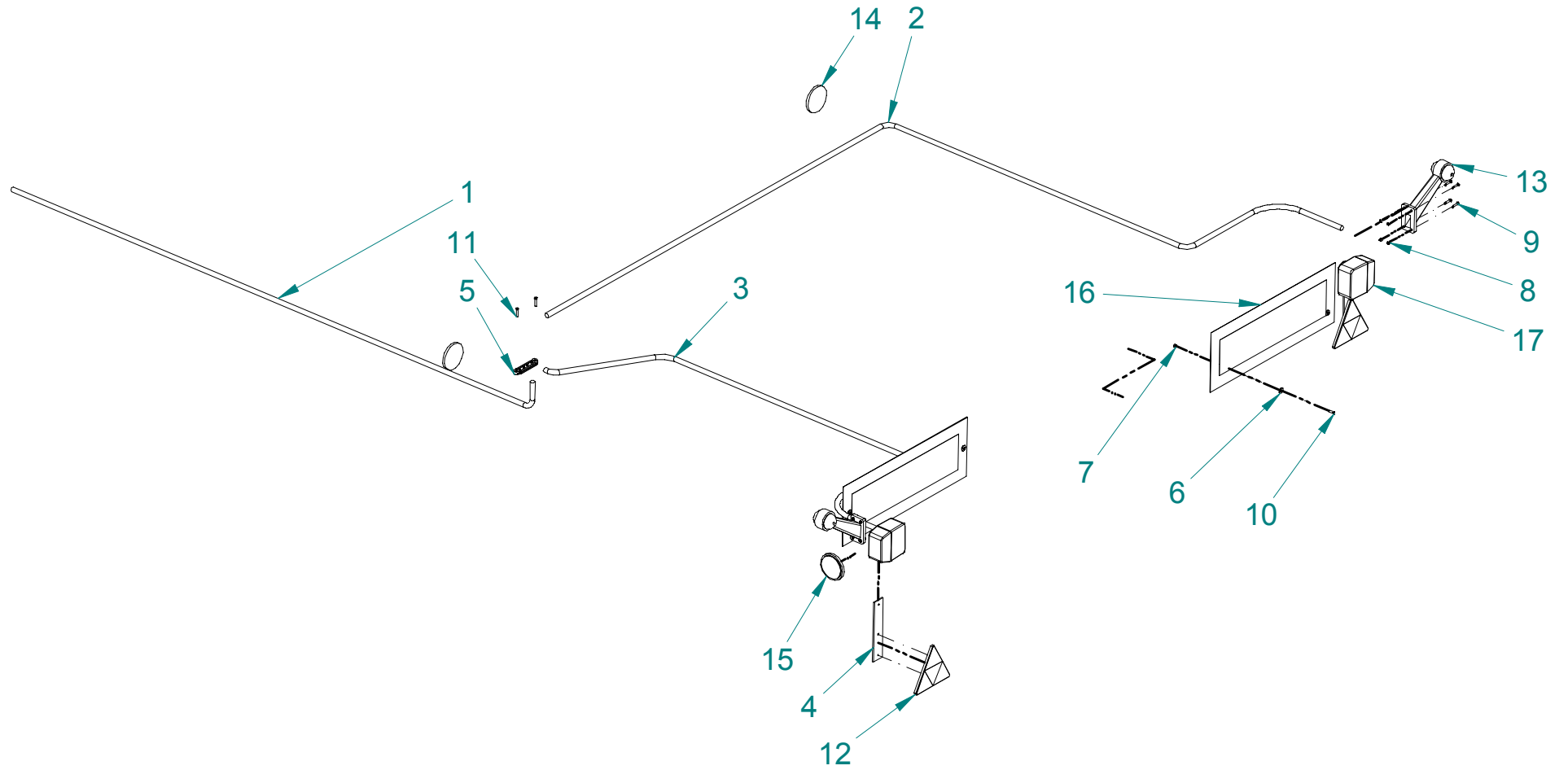
No. in the Drawing	No. of Drawing or Norm	Part Name	Qty	Notes
1	089-000975-5.417	Spring	1	
2	3-0345-201-103.00	Bolt	1	
3	3-0345-201-510.00	Outer pipe assy., weld	1	
4	3-0345-201-520.01	3-0345-201-520.01 Outer pipe assy., weld.asm	1	
5	3-0345-201-530.00	Screw assy. welded	1	
6	5225-120-540.00	Handle assy.	1	
7	PN-M-85023	Spring pin 8 x 35	1	
8	PN-M-85023	Spring pin 8 x 50	1	

Axle assy. 1850 3600-060-500.10

Table 10

No. in the Drawing	No. of Drawing or Norm	Part Name	Qty	Notes
1	400x60-15.5 (-50)	Wheel	2	
2	A50JA0600K50	Axle assy.	1	

Table 11 Electrical installation assy. 5585-071-500.00



Electrical installation assy. 5585-071-500.00

Table 11

No. in the Drawing	No. of Drawing or Norm	Part Name	Qty	Notes
1	5585-071-510.00	Main line assy.	1	
2	3600-071-540.10	Wiring harness right	1	
3	3600-071-530.10	Wiring harness left	1	
4	5270-140-101.01	Belt	2	
5	7051/05-00-004	4-terminal connector plate, assy.	1	
6	PN-M-82030	Round washer 6.5 Fe/Zn8	1	
7	PN-M-82144	Nut M5-8-B-Fe/Zn8	4	
8	PN-M-82175	Self-locking nut M5-8-B Fe/Zn8	8	
9	PN-M-82202	Screw H M5x20-8.8-B Fe/Zn8	8	
10	PN-M-82215	Screw M 5x16-5.8-B Fe-Zn8	4	
11	PN-M-82215	Screw M 5x25-5.8-B Fe-Zn8	4	
12	UT-150S	Reflective device UT-150S	2	
13	1155-111-016	Front/rear compact marker lamp W21.3z	2	
14	1132-320-003	Round reflective device, white, adhesive 75T	2	
15	1132-320-002	Round reflective device, yellow, adhesive 75T	2	
16	WT-P/2	Warning plate (565x200)	2	Option
17	1155-111-001	Rear compact lamp LT-70	2	

Table 12 Painting 5585-072-500.01 (Frontal view)

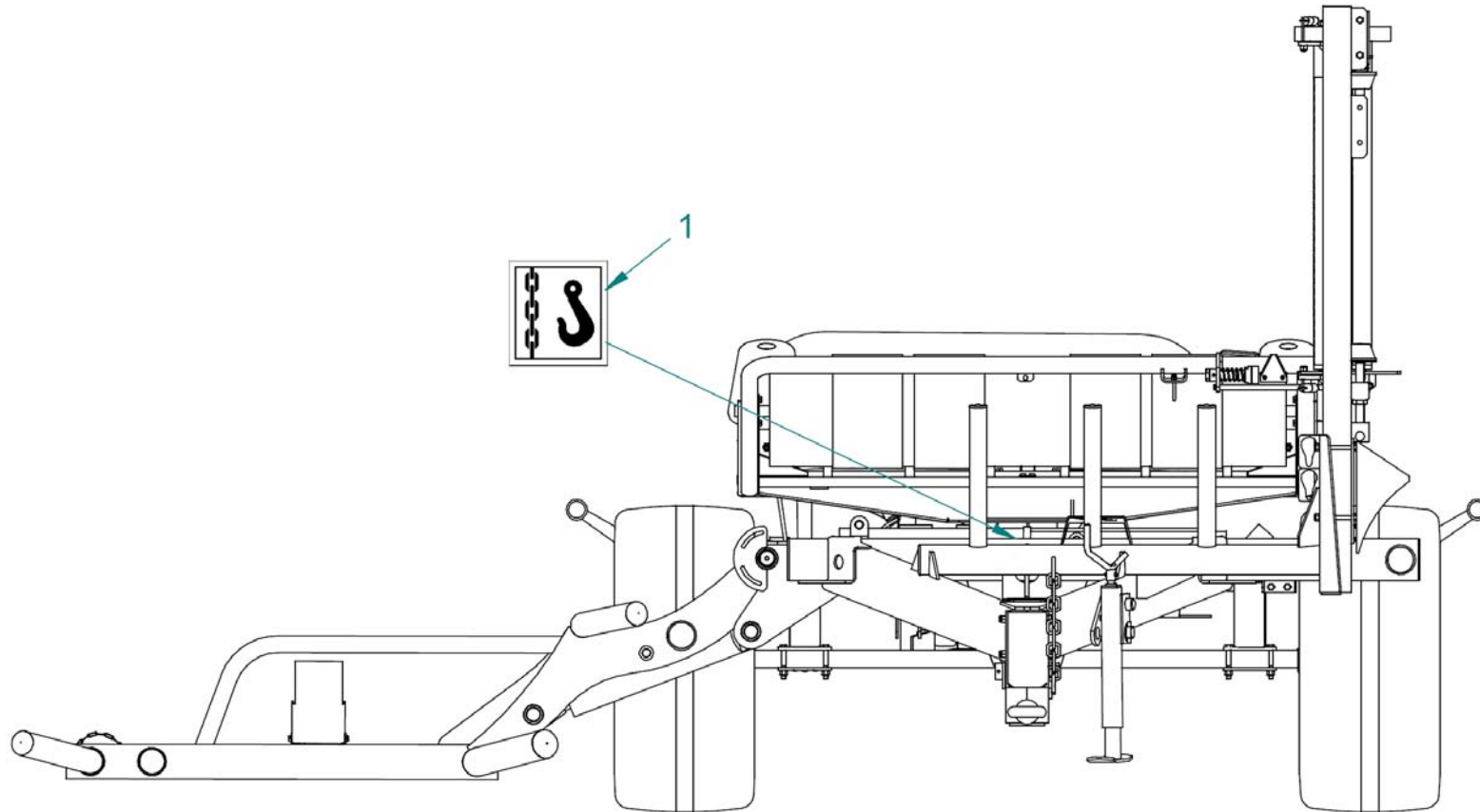
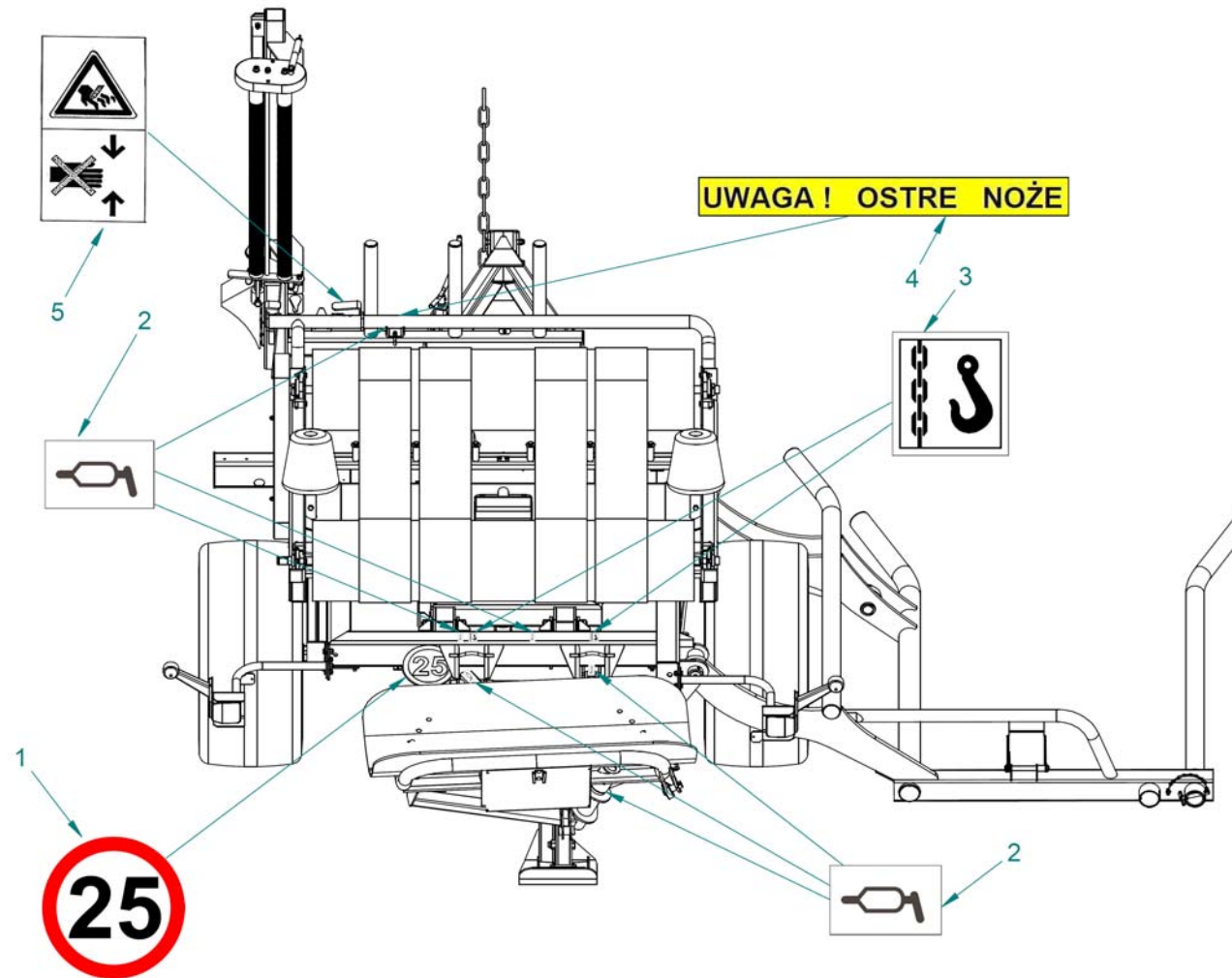


Table 13 Painting 5585-072-500.01 (Rear view)



Original	Translation
UWAGA! OSTRZE NOŻE	WARNING! SHARP BLADES

Painting 5585-072-500.01 (Frontal view)

Table 12

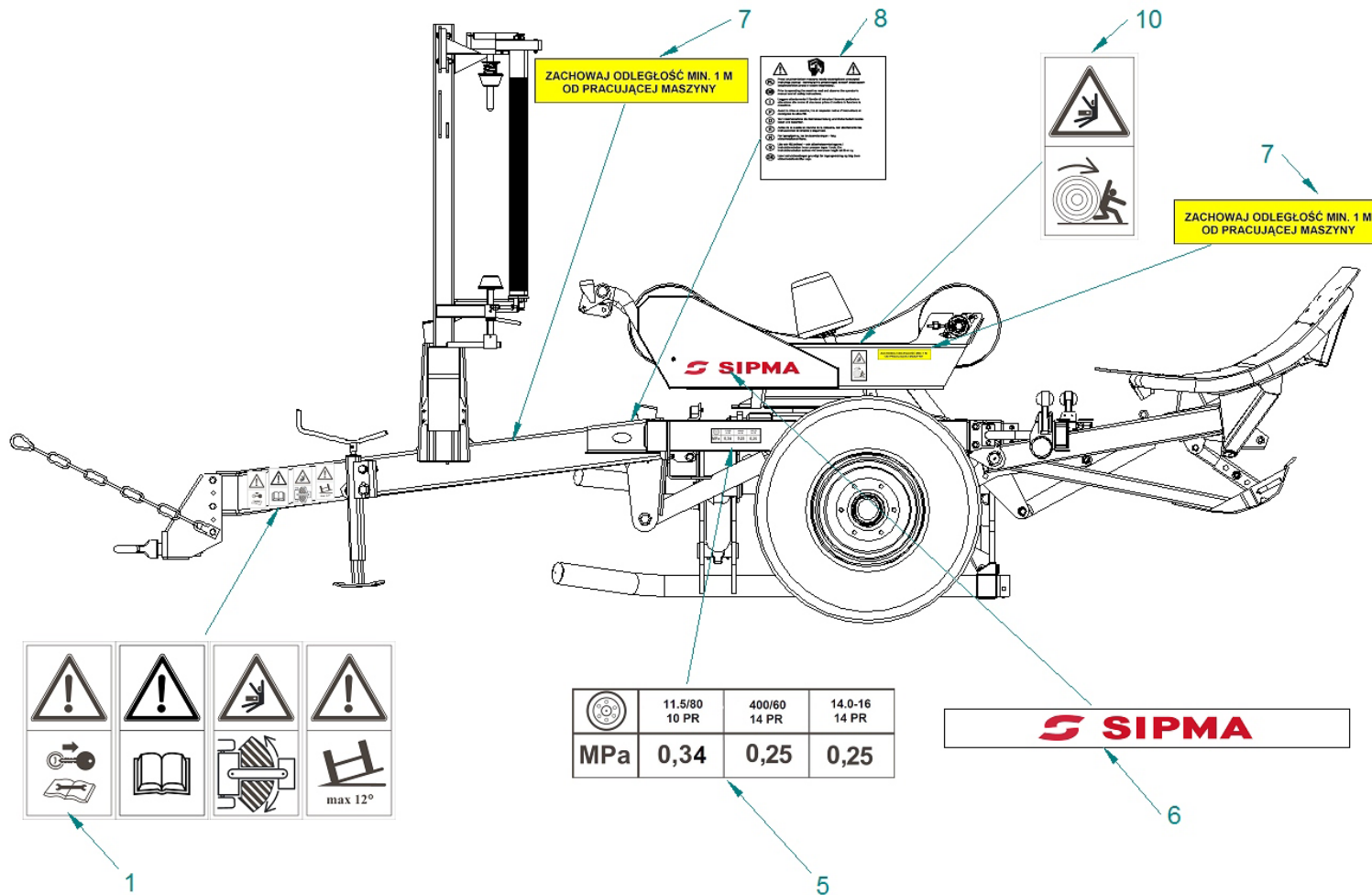
No. in the Drawing	No. of Drawing or Norm	Part Name	Qty	Notes
1	5276-170-161.00	Label – greasing point	1	

Painting 5585-072-500.01 (Rear view)

Table 13

No. in the Drawing	No. of Drawing or Norm	Part Name	Qty	Notes
1	3050-100-100.01	Label “25”	1	
2	5276-170-161.00	Label – greasing point	6	
3	5276-170-148.00	Label – hook hitch	2	
4	1600-080-107.00	Label VII	1	
5	5281-160-106.00	Warning label I	1	

Table 14 Painting 5585-072-500.01 (Left side view)



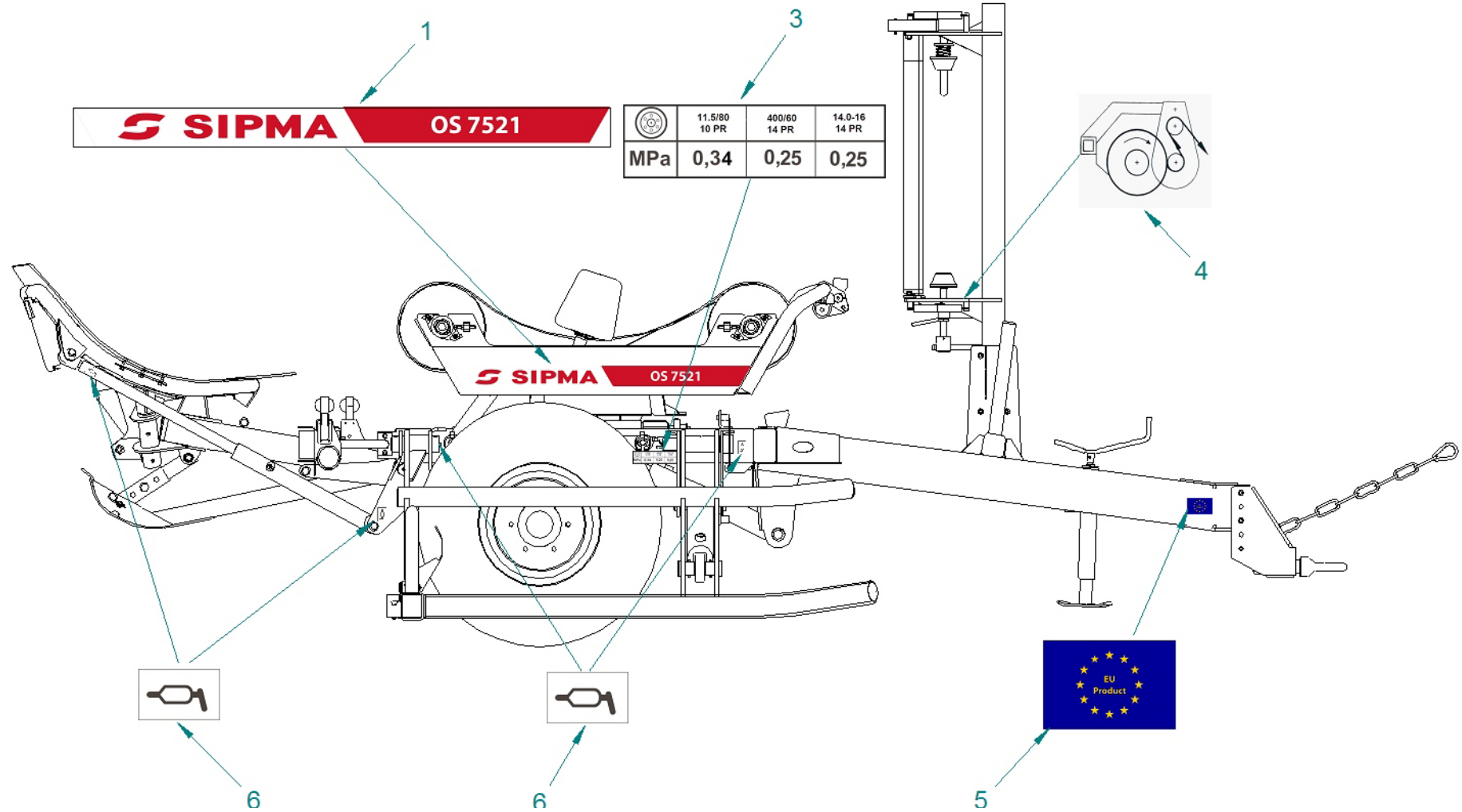
Original	Translation
ZACHOWAJ ODLEGŁOŚĆ MIN. 1 OD PRACUJĄCEJ MASZYNY	STAY AT LEAST 1 M AWAY FROM WORKING MACHINE

Painting 5585-072-500.01 (Left side view)

Table 14

No. in the Drawing	No. of Drawing or Norm	Part Name	Qty	Notes
1	5279-170-118.00	Summary label – hitching	1	
2				
3				
4				
5	5276-170-153.00	Pressure label	1	
6	3600-072-102.00	SIPMA label	1	
7	1600-080-106.00	Label VI	2	
8	5276-170-225.00	Label – caution, consult instruction manual	1	
9				
10	7150-110-114.01	Label – bale unloading	1	

Table 15 Painting 5585-072-500.01 (Right side view)



Painting 5585-072-500.01 (Right side view)

Table 15

No. in the Drawing	No. of Drawing or Norm	Part Name	Qty	Notes
1	5585-072-101.00	Label OS 7521	1	
2			1	
3	5276-170-153.00	Pressure label	1	
4	1600-080-104.00	Label IV	1	
5	5276-170-243.01	EU Product	1	
6	5276-170-161.00	Label – greasing point	4	

Table 16 Hydraulic installation 5585-073-500.00

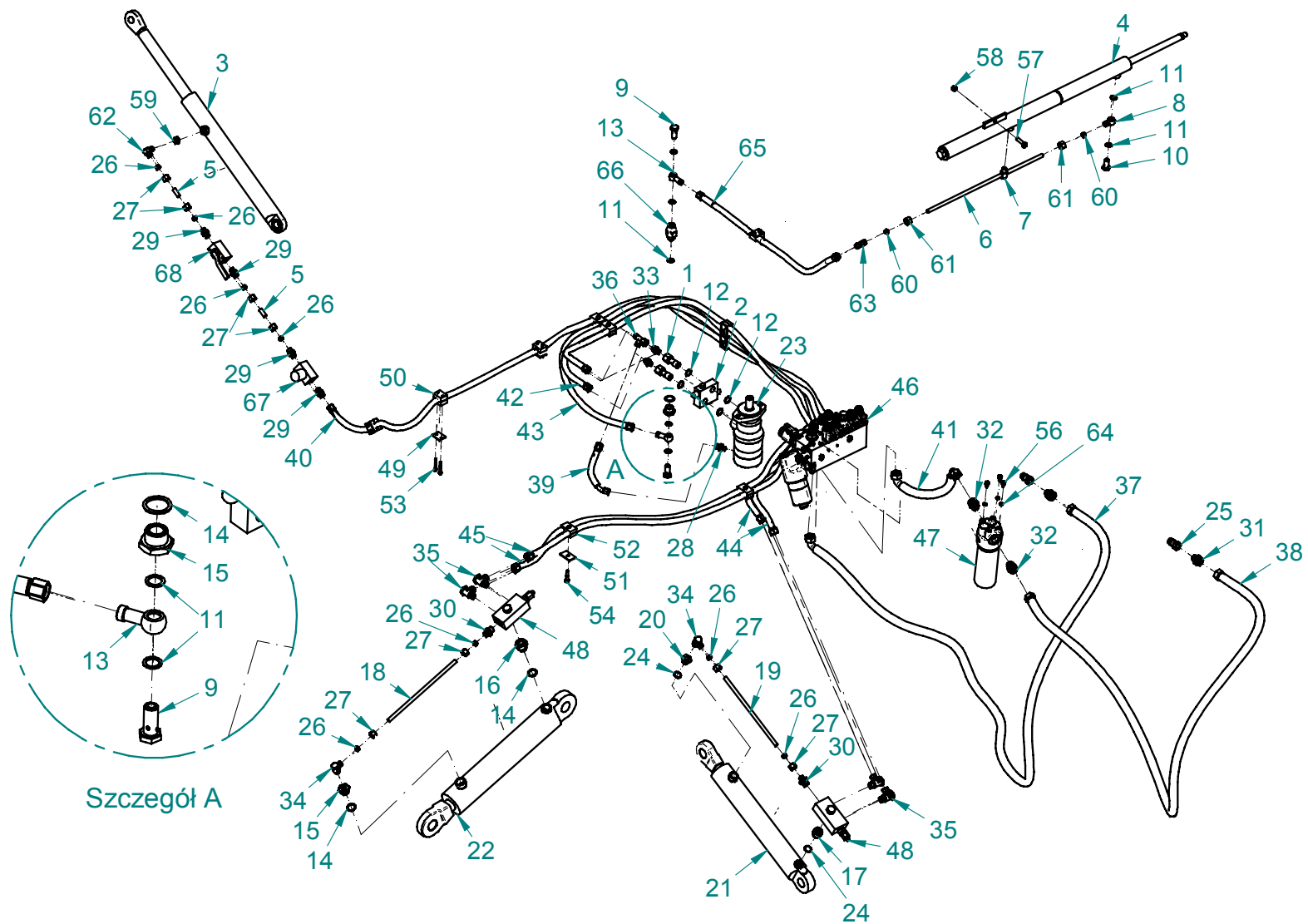
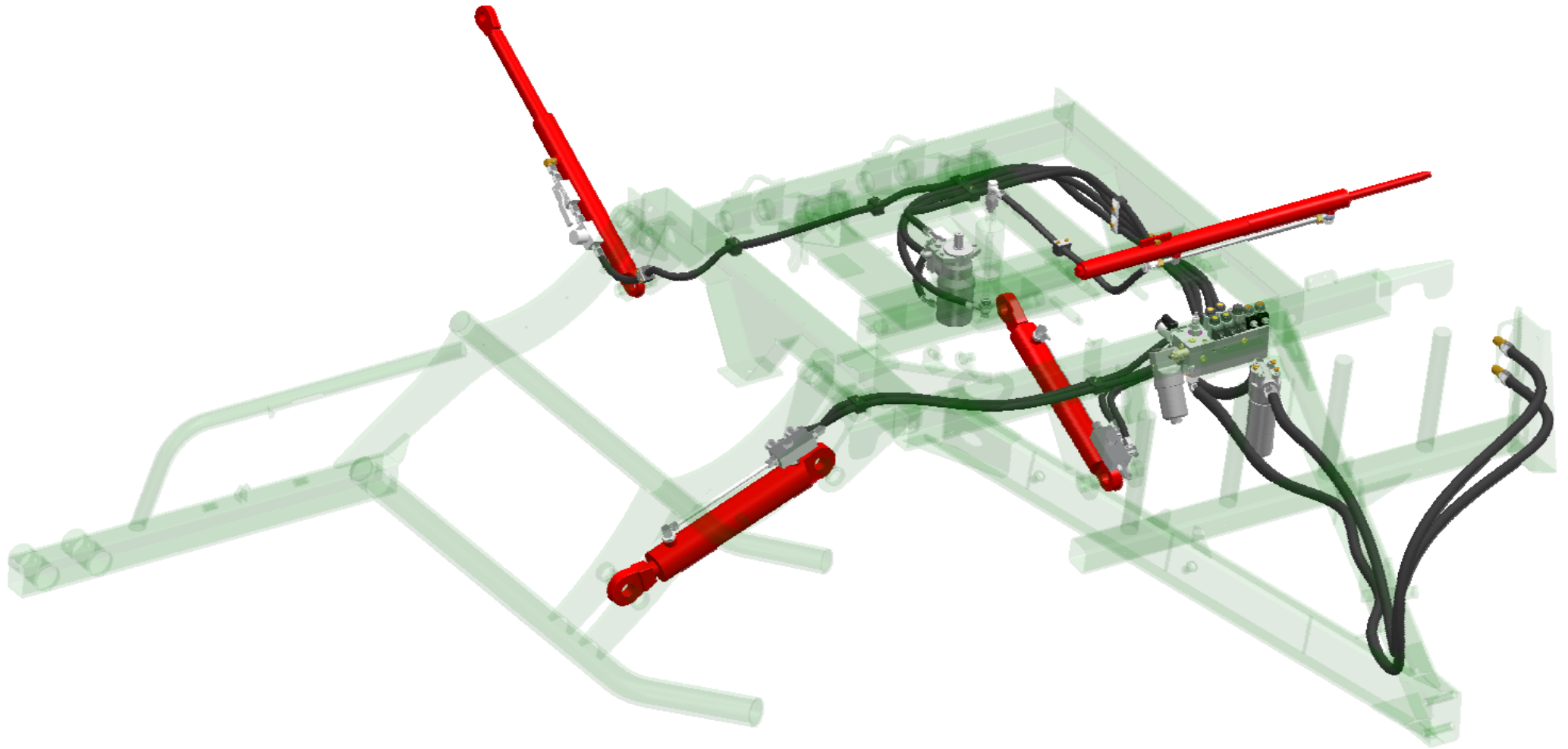


Table 17 Hydraulic installation 5585-073-500.00



Hydraulic installation 5585-073-500.00

Table 16

No. in the Drawing	No. of Drawing or Norm	Part Name	Qty	Notes
1	1600-050-100.01	Special connector	2	
2	1600-050-510.00	Special valve assy.	1	
3	3600-000-114.01	Plunger actuator 40x400 special l=1320	1	
4	3600-030-700.00	3600-030-700.00	1	
5	3600-073-110.00	Tube	2	
6	3600-073-117.00	Cutter tube	1	
7	3600-073-118.10	Cutter connector	1	
8	5270-120-108.00	Ring connector 3/8" - 45	1	
9	5270-120-109.00	Connector screw 3/8" - 38	2	
10	5270-120-110.00	Connector screw 3/8" - 32	1	
11	5270-120-118.00	Washer 3/8"	7	
12	5270-120-119.00	Washer 1/2"	4	
13	5270-120-128.00	Ring connector – 60	2	
14	5281-130-111.00	Sealing ring 27.3	3	
15	5281-130-112.00	Differential sleeve M27x3/8"	2	
16	5585-073-100.00	Reducing sleeve M27x2 - 1/2"	1	
17	5585-073-101.00	Reducing sleeve M22x1.5 - 1/2"	1	
18	5585-073-102.00	Arm tube	1	
19	5585-073-103.00	Table tube	1	
20	800-070-110.00	Differential sleeve M22x1.5 - 3/8"	1	

Hydraulic installation 5585-073-500.00

Table 16

21	0876-332-020	CJ2F-16-63/36/320z + EU2- 63w	1	
22	0876-332-019	CJ2F-16-80/45/320z + EU2- 80w	1	
23	0876-310-018	Hydraulic motor B/MR 160 C	1	
24	BN 3611-04	Washer 22.2 (11.1.04)	2	
25	NV12GAS-M	Quick coupling	2	
26	A421100-12-18B4	Cutting ring	8	
27	A431100-12-18	Nut M18x1.5	8	
28	A501106-12-04	Straight connector 1/4" - M18x1.5	1	
29	A501106-12-06	Straight connector 3/8" - M18x1.5	4	
30	A501106-12-08	Straight connector 1/2" - M18x1.5	2	
31	A501106-22-08	Straight connector 1/2" - M30x2	2	
32	A501106-22-12	Straight connector 3/4" - M30x2	2	
33	A501114-12-16	Straight connector M18x1.5 - M16x1.5	2	
34	A521103-12-06	Banjo connector 3/8"	2	
35	A521103-15-08	Banjo connector 1/2"	4	
36	A721115-12-18	Asymmetrical adjustable tee M18x1.5	1	
37	Hydraulic hose	M21513-12-30_H01084019_M21593-12-30 dĭ-3500	1	
38	Hydraulic hose	M21513-12-30_H01084019_M21513-12-30 dĭ-3200	1	
39	Hydraulic hose	M21543-06-18_H01084010_M21513-06-18 dĭ-200	1	
40	Hydraulic hose	M21513-06-18_H01084010_M21513-06-18 dĭ-2900	1	
41	Hydraulic hose	M21593-06-22_H01084019_M21593-12-30 dĭ-350	1	
42	Hydraulic hose	M21513-06-18_H01084010_M21513-06-18 dĭ-1850	2	

Hydraulic installation 5585-073-500.00

Table 16

43	Hydraulic hose	M21513-06-18_H01084010_M21513-06-18 dĭ-2050	1	
44	Hydraulic hose	M21593-06-18_H01084010_M21513-06-22 dĭ-650	2	
45	Hydraulic hose	M21593-06-18_H01084010_M21513-06-22 dĭ-1500	2	
46	0829-601-466	Hydraulic block	1	
47	0829-601-501	Oil filter	1	
48	B-LM-A-SBV	Inhibiting valve	2	
49	HRL2DPSTZN	Handle cover	4	
50	HRL2KP18PP	Handle jaw	4	
51	HRZ2DPSTZN	Double handle cover	6	
52	HRZ2KP18-18PP	Double handle jaw	6	
53	PN-EN ISO 4014	Screw M 6 x 45 - 8.8 - R3J	6	
54	PN-EN ISO 4014	Screw M 8 x 40 - 8.8 - R3J	6	
55	PN-EN ISO 4014	Screw M 6 x 40 - 8.8 - R3J	2	
56	PN-EN ISO 4017	Screw M 8 x 16 - 8.8 - A3L	3	
57	PN-EN ISO 4017	Screw M10 x 40 - 8.8 - R3J	1	
58	PN-EN ISO 7040	Self-locking nut M10 - 8 - A3L	1	
59	PN-M-73109	Counter nut M16x1.5	1	
60	PN-M-73137	Cutting ring 16-10	2	
61	PN-M-73139	Nut 16-10	2	
62	PN-M-73142	Stud elbow housing 16-10	1	
63	PN-M-73143	Elbow connector housing 16-10	1	
64	PN-M-82008	Spring washer Z 8.2 A3L	3	

Hydraulic installation 5585-073-500.00

Table 16

65	Hydraulic hose	M21513-06-18_H01084010_M21513-06-18 dł-1000	1	
66	SJ 10-06	Rotary connector 3/8"	1	
67	VRFU 380BSPP 3/8"	Unidir. flow control valve	1	
68	RS 2 3/8"	Cut-off valve	1	