



SIPMA S.A.
ul. Budowlana 26, 20-469 Lublin
tel. (+48-81) 744-50-71, 744-12-81
fax (+48-81) 744-09-64
www.sipma.pl, e-mail: info@sipma.pl

***BALE WRAPPER
OS 7510 KLARA***



PARTS CATALOGUE

Edition II - 2011

How to use this catalog to order parts

This catalog includes figure and text call outs for elements of Bale wrapper Z-557 with all assembly equipment.

When ordering spare parts:

- 1) Identify the assembly which includes the part of interest, locate the applicable assembly figure and the part in the figure.
- 2) Using the part number from the figure, find the figure number in the figure, the part's name and quantity. The part information includes an additional KTM numbers:
- 3) State the exact part number in the figure (or the KTM number) with the name and required quantity in the order.
- 4) State the type and factory number of the machine, year of manufacture and the exact delivery address.

The manufacturer reserves the right to introduce minor design modifications without the need for ongoing updating of the parts catalog.

TABLE OF CONTENTS

1. FIGURE 1 BOTTOM FRAME (CHASSIS).....	4
2. FIGURE 2 SWING FRAME	7
3. FIGURE 3 ROTARY FRAME.....	11
4. FIGURE 4 UNIVERSAL FILM FEEDER 500/750.....	16
5. FIGURE 5 FILM GRIPPER AND CUTTER WITH CONTROLLER.....	20
6. FIGURE 6 HYDRAULIC SYSTEM.....	24

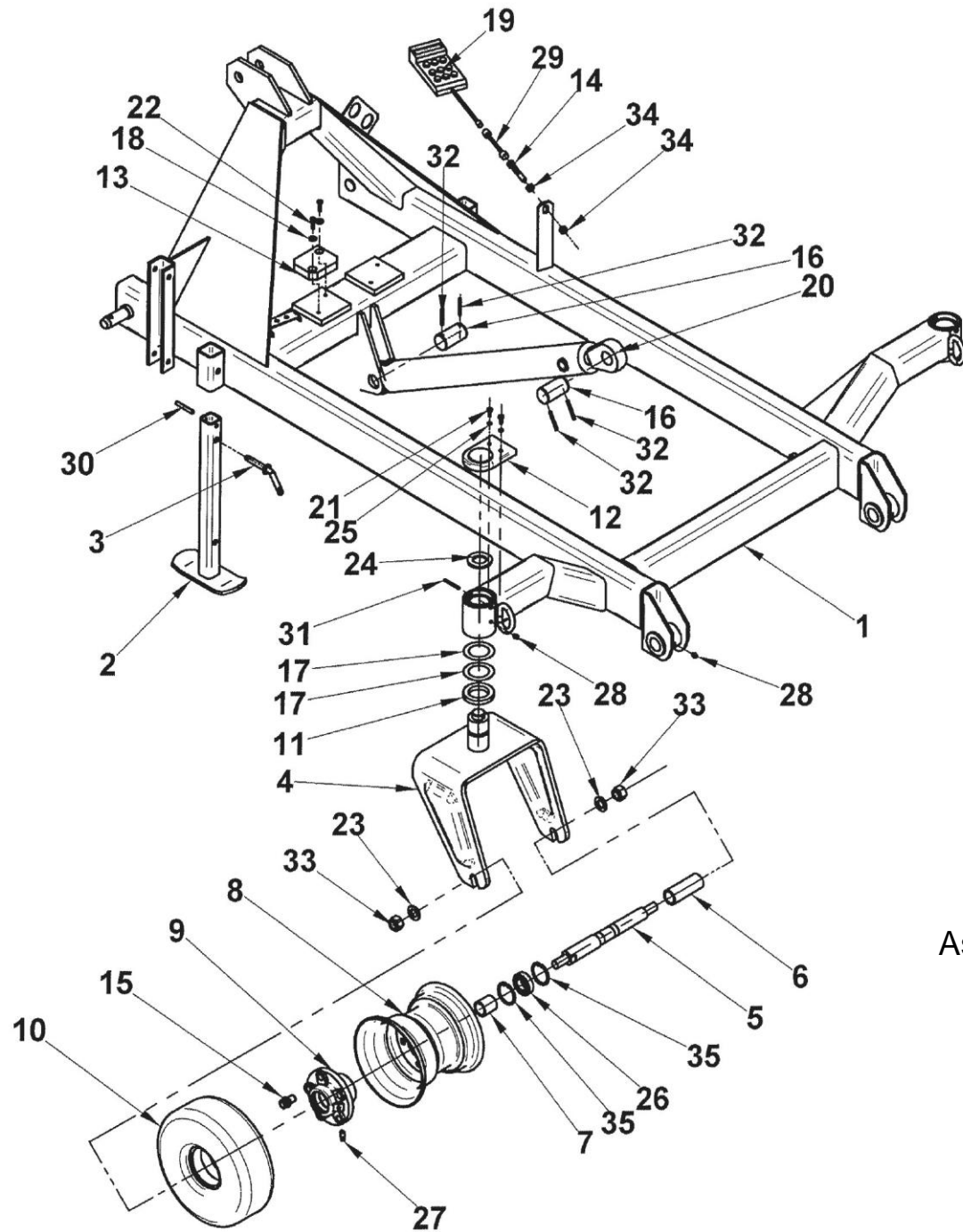


Figure 1

- Assemblies: 010-510.00 Bottom frame
 010-630.00 Welded leg
 050-540.00 Locking pin set
 060-500.00 Fork set

Bottom frame

Figure 1

Number in figure	Figure name or standard name	Part name	Quantity	Product-material code no
1.	5557-010-510.00	Welded bottom frame	1	
2.	5557-010-630.00	Welded leg	2	
3.	5557-050-540.00	Locking pin set	2	
	5557-060-500.00	Fork set (Item 4 to 12+15+17+21+24 to 27+31)	2	
4.	5557-060-510.00	Welded fork	1/set	
5.	5557-060-100.00	Wheel axle	1/set	
6.	5557-060-108.00	Spacer	1/set	
7.	5557-060-107.00	Spacer	1/set	
8.		Rim	1/set	
9.	5557-060-110.00	Wheel hub	1/set	
10.		Tyre	1/set	
11.	5557-060-109.00	Bronze washing	1/set	
12.	5557-000-198.00	Cap	1/set	
13.	8730-020-117.00	Rubber stopper	2	
14.	5281-070-101.00	Special screw	1	
15.	2010-020-106.00	Wheel screw	5/set	
16.	5557-000-103.00	Cylinder axis	2	
17.	5557-000-190.00	Washer	2/set	

Bottom frame

Figure 1 – continued

Number in figure	Figure name or standard name	Part name	Quantity	Product-material code no
18.	PN/M-82030	Washer 6	4	
19.	1600-100-630.00	Timer (24/16)	1	
20.		Cylinder CJ2F16-63/36/630DGz+UE2 63w	Included in hydraulic system	
21.	PN/M-82105	Screw M6x16	2/set	
22.	PN/M-82302	Screw M6x25	4	
23.	PN/M-82005	Washer 21	2	
24.	PN/M-82005	Washer 34	1/set	
25.	PN/M-82008	Spring washer Z 6.1	2/set	
26.		Bearing 6006 Z	1/set	
27.	PN/M-86003	Grease nipple St M8x1 - 45	1/set	
28.	PN/M-86002	Grease nipple St M6x1	4	
29.	1600-100-610.20	Contactron proximity switch	1	
30.	PN/M-85023	Spring pin 8x55	1	
31.	PN/M-85023	Spring pin 5x50	1/set	
32.	PN/M-85023	Spring pin 6x48	4	
33.	PN/M-82175	Self-locking nut M20	2	
34.	PN/M-82175	M10 Nut	2	
35.	PN/M-85111	Retaining ring W55	2	
36.				

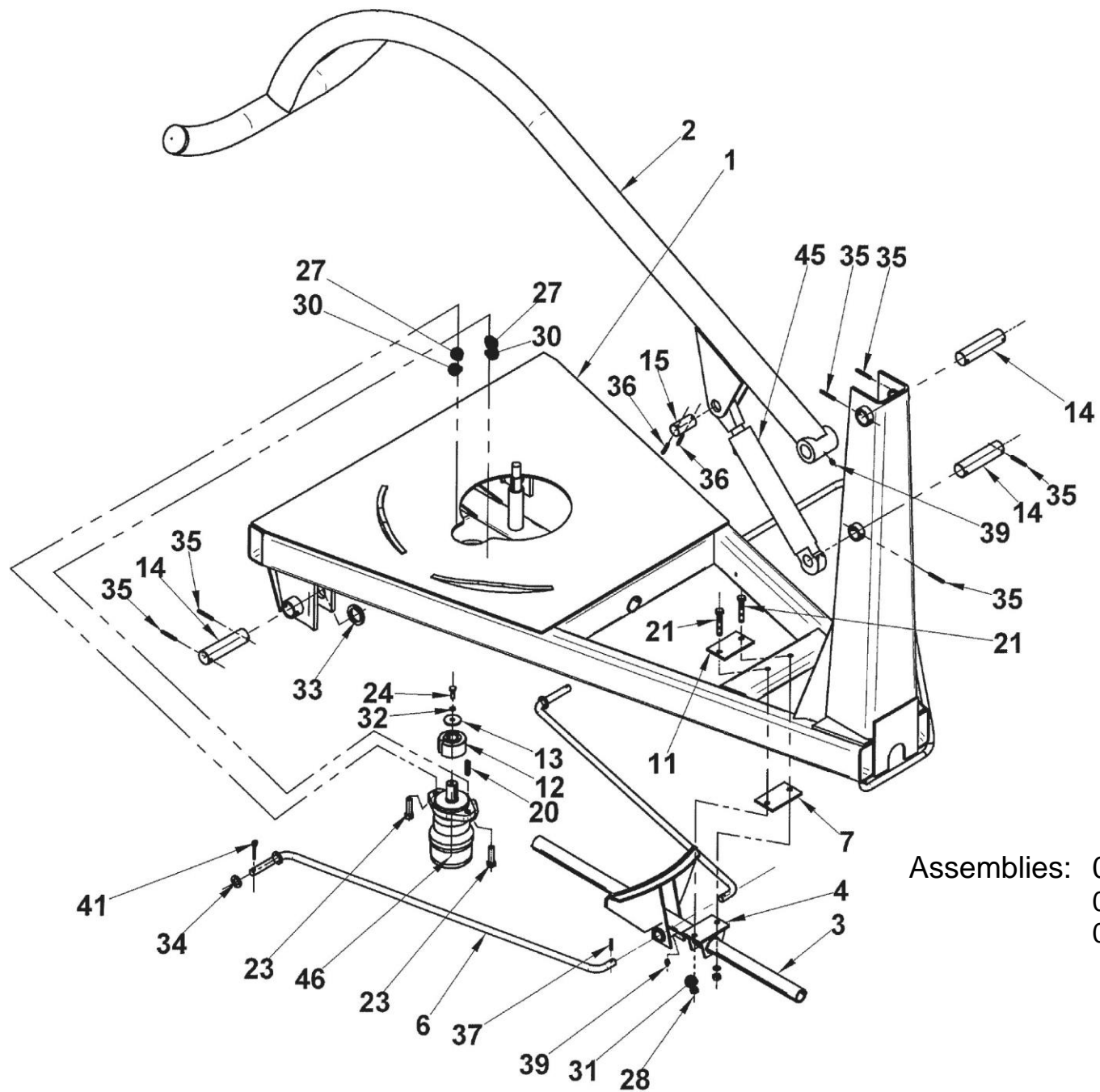


Figure 2

- Assemblies: 020-810.00 Swing frame
 010-640.00 Welded leg
 070-750.00 Welded pusher

Swing frame

Figure 2

Number in figure	Figure name or standard name	Part name	Quantity	Product-material code no
1.	5557-020-810.00	Swing frame	1	
2.	5557-010-640.00	Welded leg	1	
3.	5557-070-750.00	Pusher	1	
4	5557-070-580.00	Welded support	1	
5.				
6.	5557-070-560.00	Welded cable	2	
7.	5557-070-191.00	Plate	as required	
8.				
9.				
10.				
11.	5557-070-130.00	Plate	1	
12.	5557-040-101.00	Toothed ring z=11	1	
13.	1600-020-123.00	Washer 9x40x4	1	
14.	5557-000-100.00	Swivel	4	
15.	5557-000104.00	Cylinder axis	1	
16.				
17.				
18.				
19.				
20.	PN/M-85005	Parallel key A8x7x40	1	

Swing frame

Figure 2 – continued

Number in figure	Figure name or standard name	Part name	Quantity	Product-material code no
21.	PN/M-82101	Screw M10x65	2	
22.				
23.	PN/M-82105	Screw M12x45	2	
24.	PN/M-82105	Screw M8x25	1	
25.				
26.				
27.	PN/M-82144	M12 Nut	2	
28.	PN/M-82144	M10 Nut	2	
29.	PN/M-82008	Spring washer Z 12.2	2	
30.	PN/M-82008	Spring washer Z 10.2	2	
31.	PN/M-82008	Spring washer Z 8.2	1	
32.	PN/M-82004	Washer 36	2	
33.	PN/M-	Washer 17	2	
34.	PN/M-05023	Spring pin 6x48	4	
35.				
36.	PN/M-85023	Spring pin 6x40	2	
37.	PN/M-85023	Spring pin 4x36	2	
38.				
39.	PN/M-86002	Grease nipple St M6x1	2	
40.				

Swing frame

Figure 2 – continued

Number in figure	Figure name or standard name	Part name	Quantity	Product-material code no
41.	PN/M-82001	Locking pin 4x30	2	
42.				
43.				
44.				
45.	Included in the hydraulic installation	Cylinder CJ2F16-50/28/200z+UE 50w		
46.	Included in the hydraulic installation	Hydraulic cylinder SR200		
47.				
48.				
49.				
50.				
51.				
52.				
53.				
54.				
55.				
56.				
57.				
58.				

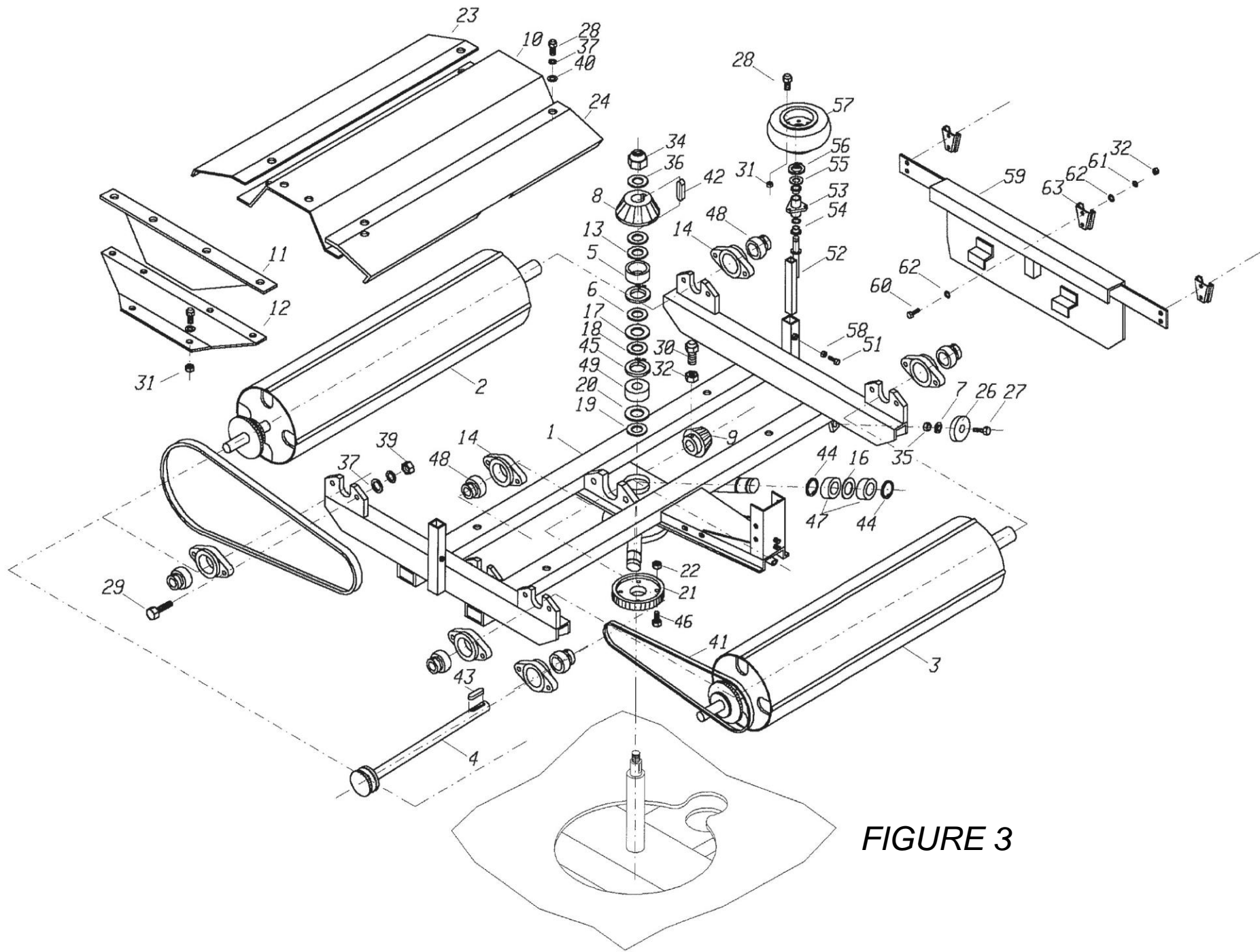


FIGURE 3

Rotary frame

Figure 3

Number in figure	Figure name or standard name	Part name	Quantity	Product-material code no
1.	5557-030-510.00	Welded rotary frame	1	
2.	2600-030-520.01	Welded roller I	1	
3.	2600-030-530.01	Welded roller II	1	
4.	1600-030-540.00	Welded drive roller	1	
5.	5557-000-111.00	Spacer	1	
6.	089-000-712-0.293	Washer	1	
7.	1600-030-141.00	Special washer	1	
8.	1600-030-102.00	Bevel wheel z=17	1	
9.	1600-030-102.00	Bevel wheel z=25	1	
10.	1600-030-110.00	Long cover	1	
11.	1600-030-111.01	Cover II	1	
12.	1600-030-112.01	Cover I	1	
13.	5557-000-180.00	Washer	2	
14.	5261-010-001.00	Bearing housing O206	6	
15.	089-000-712-0.286	Washer	2	
16.	089-000-712-0.273	Washer 30x42x1	4	
17.	5557-000-150.00	Washer 72x1	1	
18.	5557-000-151.00	Rubber washer	1	
19.	5557-000-152.00	Washer 60x1	1	
20.	5557-000-153.00	Rubber washer	1	

Rotary frame

Figure 3 – continued

Number in figure	Figure name or standard name	Part name	Quantity	Product-material code no
21.	5281-040-100.02	Toothed ring z=48	1	
22.	5270-100-141.00	Control beam nut	4	
23.	1600-030-160.00	Steel cover	1	
24.	5557-030-160.00	Steel cover	1	
25.				
26.		Magnet FS-25(34x10,5x5,5)	1	
27.	PN-M-82207	Screw M5x25-5.8-B-Fe/Zn8	1	
28.	PN-M-82105	Screw M6x16-8.8-B-Fe/Zn8	26	
29.	PN-M-82105	Screw M10x40-8.8-B-Fe/Zn8	12	
30.	PN-M-82305	Screw M8x25-33H-Fe/Zn8	1	
31.	PN-M-82144	Nut M6-8-B-Fe/Zn8	12	
32.	PN-M-82144	Nut M8-8-B-Fe/Zn8	7	
33.	PN-M-82144	Nut M10-8-B-Fe/Zn8	12	
34.	PN-M-82175	Self-locking nut M20-8-B-Fe/Zn8	1	
35.	PN-M-82144	Nut M5-8-B-Fe/Zn8	1	
36.	PN-M-82005	Washer 21Fe/Zn8	1	
37.	PN-M-82008	Spring washer Z6,1Fe/Zn8	14	
38.	PN-M-82008	Spring washer Z8,1Fe/Zn8	14	
39.	PN-M-82030	Round washer 10,5Fe/Zn8	8	
40.	PN-M-82030	Round washer 6,5Fe/Zn8	10	

Rotary frame

Figure 3 – continued

Number in figure	Figure name or standard name	Part name	Quantity	Product-material code no
41.	PN-M-84168	Chain 10B-77WZ	2	
42.	PN-M-85005	Parallel key A8x7x32	1	
43.	PN-M-85005	Parallel key A8x7x40	1	
44.	PN-M-85111	Spring retaining ring Z30	8	
45.	PN-M-85111	Spring retaining ring W72	2	
46.	PN-M-82101	Screw M12x40-8.8-B-Fe/Zn8	4	
47.	PN-M-86100	Standard ball bearing 6306-2RS	8	
48.	PN-M-86120	Standard ball bearing D-206	6	
49.		Spherical bearing 22207	1	
50.				
51.	PN-M-82105	Screw M12x30-8.8-B-Fe/Zn8	2	
52.	1600-060-520.00	Welded wheel support	2	
53.	1600-060-510.00	Welded hub	2	
54.	1-1322-169-147	Bushing	4	
55.	PN-M-82005	Washer 25Fe/Zn8	2	
56.	PN-M-85111	Spring retaining ring Z25	2	
57.	AGROMECH Lubianka	Sport tyre SLICK FRONT 4.00x4" 2PR with tube, wheel size 2.5C-4"	2	
58.	PN-M-82144	Nut M12-8-B-Fe/Zn8	2	

Rotary frame

Figure 3 – continued

Number in figure	Figure name or standard name	Part name	Quantity	Product-material code no
59.	5557-070-730.00	Transport cover set	1	
60.	PN-M-82105	Screw M8x16-8.8-B-Fe/Zn8	6	
61.	PN-M-82008	Washer Z8,2Fe/Zn8	6	
62.	PN-M-82005	Round washer 8.5Fe/Zn8	12	
63.	PN-S-73103	Holder – triangle socket 1692080 M1	3	
64.				
65.				
66.				
67.				
68.				
69.				
70.				
71.				
72.				
73.				
74.				
75.				
76.				
77.				
78.				

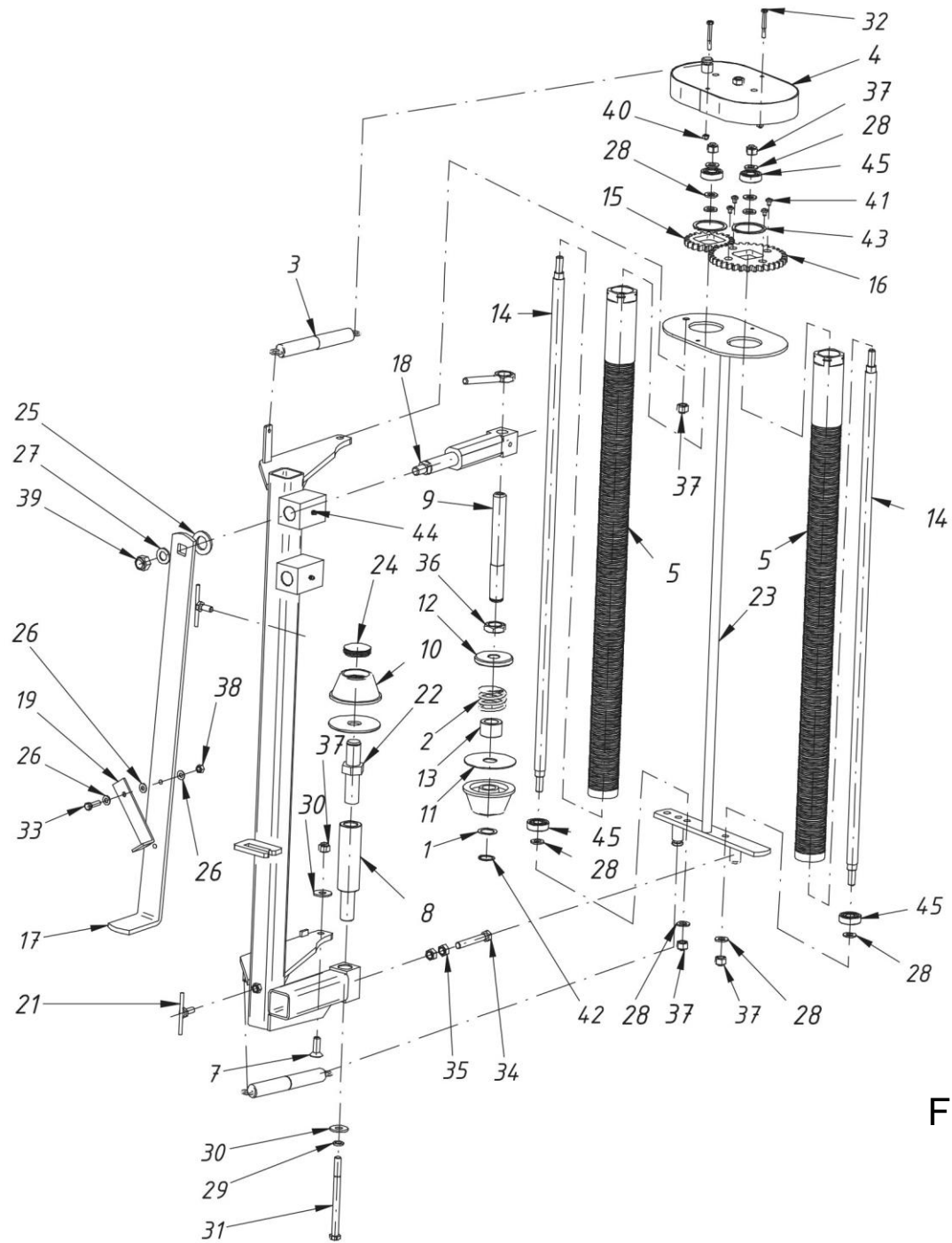


Figure 4.

Universal film feeder 500/750

Figure 4

Number in figure	Figure name or standard name	Part name	Quantity	Comments
1	089-000712-0.213	Washer	2	
2	1600-040-105.10	Spring	1	
3	1600-040-130.00	Feeder spring	2	
4	1600-040-660.00	Welded cover	1	
5	3600-080-180.00	Aluminum roller	2	
6	3600-080-740.00	Special nut	1	
7	5224-088-126.00	Screw	1	
8	5281-080-151.00	Spacer	1	
9	5281-080-311.10	Top roller swivel	1	
10	5281-080-312.00	Roller	2	
11	5281-080-313.00	Sliding washer	1	
12	5281-080-314.00	Nut	1	
13	5281-080-315.00	Bushing	1	
14	5281-080-343.00	Roller	2	
15	5281-080-344.00	Rolled toothed wheel 21 teeth	1	
16	5281-080-345.00	Rolled toothed wheel 34 teeth	1	
17	5281-080-401.10	Lever	1	
18	5281-080-402.00	Lever swivel	1	
19	5281-080-423.10	Pawl plate	1	
20	5281-080-560.40	Welded feeder frame	1	
21	5281-080-580.00	Screw M10 welded	2	

Universal film feeder 500/750

Figure 4 – continued

Number in figure	Figure name or standard name	Part name	Quantity	Comments
22	5281-080-730.00	Welded roller swivel	1	
23	5281-080-750.10	Welded roller support	1	
24	MOSS Plastics	Pipe insert SR 1560 - 460791	1	
25	PN-M-82005	Washer 25 Fe/Zn8	1	
26	PN-M-82005	Washer 8.4 Fe/Zn8	3	
27	PN-M-82005	Washer 17 Fe/Zn8	1	
28	PN-M-82005	Washer 13 Fe/Zn8	10	
29	PN-M-82008	Spring washer Z 12,2 Fe/Zn8	1	
30	PN-M-82030	Round washer 13 Fe/Zn8	3	
31	PN-M-82101	Screw M12x150-8.8-B-Fe/Zn8	1	
32	PN-M-82101	Screw M6x50-8.8-B-Fe/Zn8	2	
33	PN-M-82105	Screw M8x30-8.8-B-Fe-Zn8	1	
34	PN-M-82105	Screw M12x80-8.8-B-Fe/Zn8	1	
35	PN-M-82144	Nut M12-8-BFe/Zn8	1	
36	PN-M-82153	M24-8-B Nut	1	
37	PN-M-82175	Self-locking nut M12-8-B Fe/Zn8	6	
38	PN-M-82175	Self-locking nut M8-8-B Fe/Zn8	1	
39	PN-M-82175	Self-locking nut M16-8-B Fe/Zn8	1	
40	PN-M-82175	Self-locking nut M6-8-B Fe/Zn8	2	
41	PN-M-82202	Screw H M6x 8-8,8-B Fe/Zn8	4	
42	PN-M-85111	Spring retaining ring Z 25	2	

Universal film feeder 500/750

Figure 4 – continued

Number in figure	Figure name or standard name	Part name	Quantity	Comments
43	PN-M-85111	Spring retaining ring Z 55	2	
44	PN-M-86002	Grease nipple StM6x1	2	
45	PN-M-86100	Bearing 6203-2RS	4	
46				
47				
48				
49				
50				
51				
52				
53				
54				
55				
56				
57				
58				
59				
60				
61				
62				

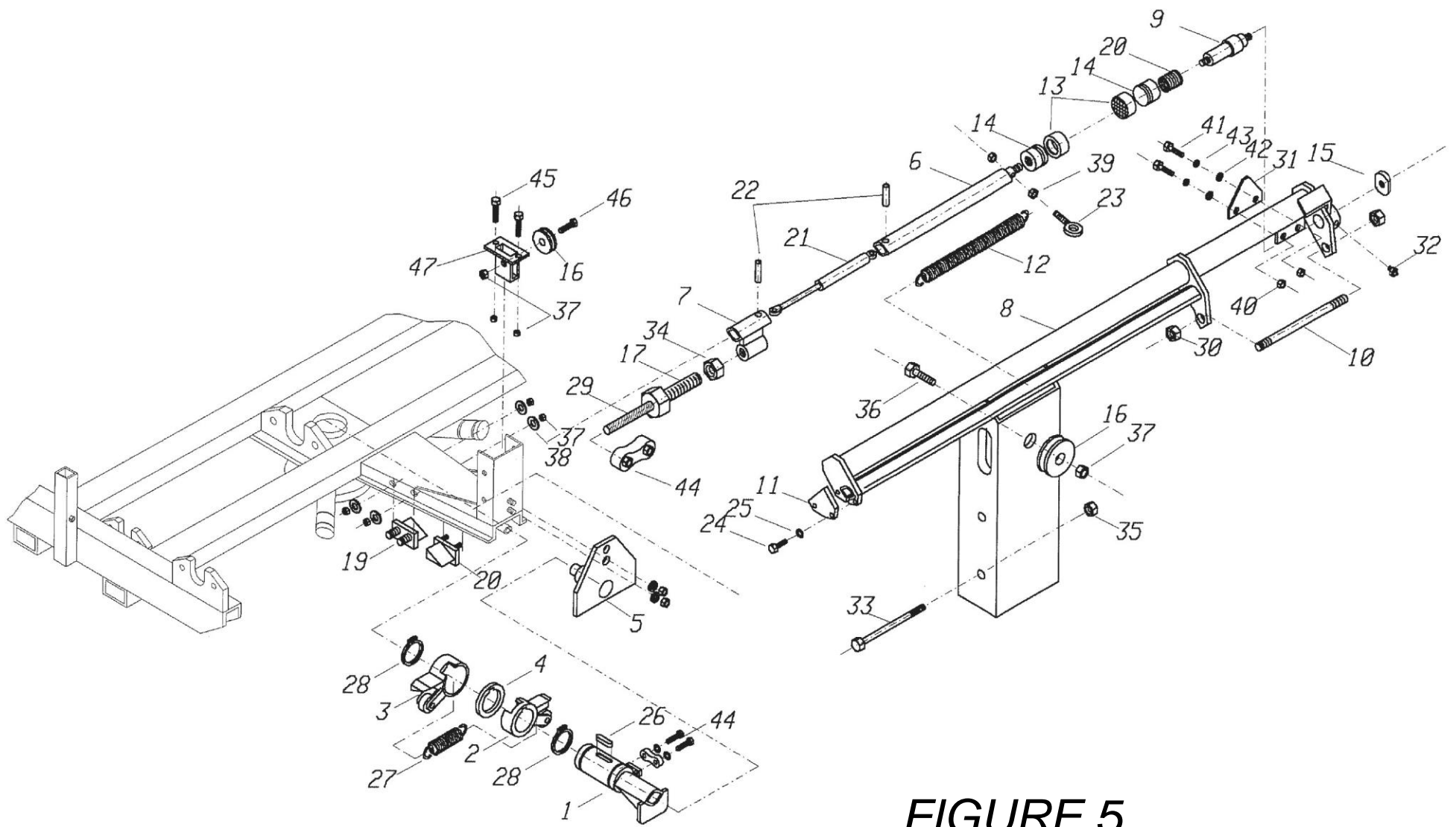


FIGURE 5

Film gripper/cutter with control

Figure 5

Number in figure	Figure name or standard name	Part name	Quantity	Product-material code no
1.	5557-070-630.00	Pawl — weld counter	1	
2.	5557-070-700.00	Pawl I	1	
3.	5557-070-710.00	Pawl II	1	
4.	5557-070-191.00	Insert	1	
5.	5557-070-570.00	Welded support	1	
6.	5557-070-540.00	Welded pipe	1	
7.	5557-070-530.00	Welded pipe	1	
8.	5557-070-510.00	Welded railing pipe	1	
9.	5557-070-131.00	Gripper swivel	1	
10.	5557-070-133.00	Rod	1	
11.	5557-070-196.00	Plate	1	
12.	5557-070-110.00	Loading spring	1	
13.	5281-080-192.00	Rubber insert	2	
14.	5281-080-191.00	Gripper ring	2	
15.	5281-080-194.00	Thrust ring	1	
16.	5270-160-207.00	Ring	2	
17.	5281-070-101.00	Special screw	1	
18.	5557-030-550.00	Pawl	1	
19.	5557-030-560.00	Pawl	1	
20.	089-000-975-5.130	Spring	1	

Film gripper/cutter with control

Figure 5 – continued

Number in figure	Figure name or standard name	Part name	pcs.	Product-material code no
21.	5270-150-700.00	Gas spring	1	
22.	PN-M-85023	Spring pin 8x22	2	
23.		Eye bolt M8x70	1	
24.	PN-M-82105	Screw M6x16-B-Fe/Zn8	2	
25.	PN-M-82008	Washer Z6,1Fe/Zn8	2	
26.	PN-M-85005	Key A8x7x40	1	
27.	089-000-976-4.111	Spring	1	
28.	PN-M-85111	Spring retaining ring Z45	2	
29.	PN-M-80239	Bowden cable 3.6x1100	1	
30.	PN-M-82175	Self-locking nut M16Fe/Zn8	2	
31.	BN-1952-03	Knife S80	1	
32.	PN-M-86002	Grease nipple StM6	1	
33.	PN-M-82101	Screw M12x150-8.8-B-Fe/Zn8	2	
34.	PN-M-82144	Nut M10-8-B-Fe/Zn8	1	
35.	PN-M-82175	Nut M12-B-Fe/Zn8	2	
36.	PN-M-82101	Screw M8x90-8.8-Fe/Zn8	1	
37.	PN-M-82175	Self-locking nut M8-Fe/Zn8	10	
38.	PN-M-82005	Washer 8,5Fe/Zn8	8	
39.	PN-M-82144	Nut M8-B-Fe/Zn8	1	
40.	PN-M-82144	Nut M5-B-Fe/Zn8	2	

Film gripper/cutter with control

Figure 5 – continued

Number in figure	Figure name or standard name	Part name	Quantity	Product-material code no
41.	PN-M-82105	Screw M5x16-8.8-B-Fe/Zn8	2	
42.	PN-M-82005	Round washer 5,3Fe/Zn8	2	
43.	PN-M-82008	Spring washer Z5,1Fe/Zn8	2	
44.	555.13.232	Linear clamp	2	
45.	PN-M-82105	Screw M8x25 -8.8-Fe/Zn8	2	
46.	PN-M-82101	Screw M8x55 -8.8-Fe/Zn8	1	
47.	5557-000-540.00	Welded ring socket	1	
48.				
49.				
50.				
51.				
52.				
53.				
54.				
55.				
56.				
57.				
58.				
59.				

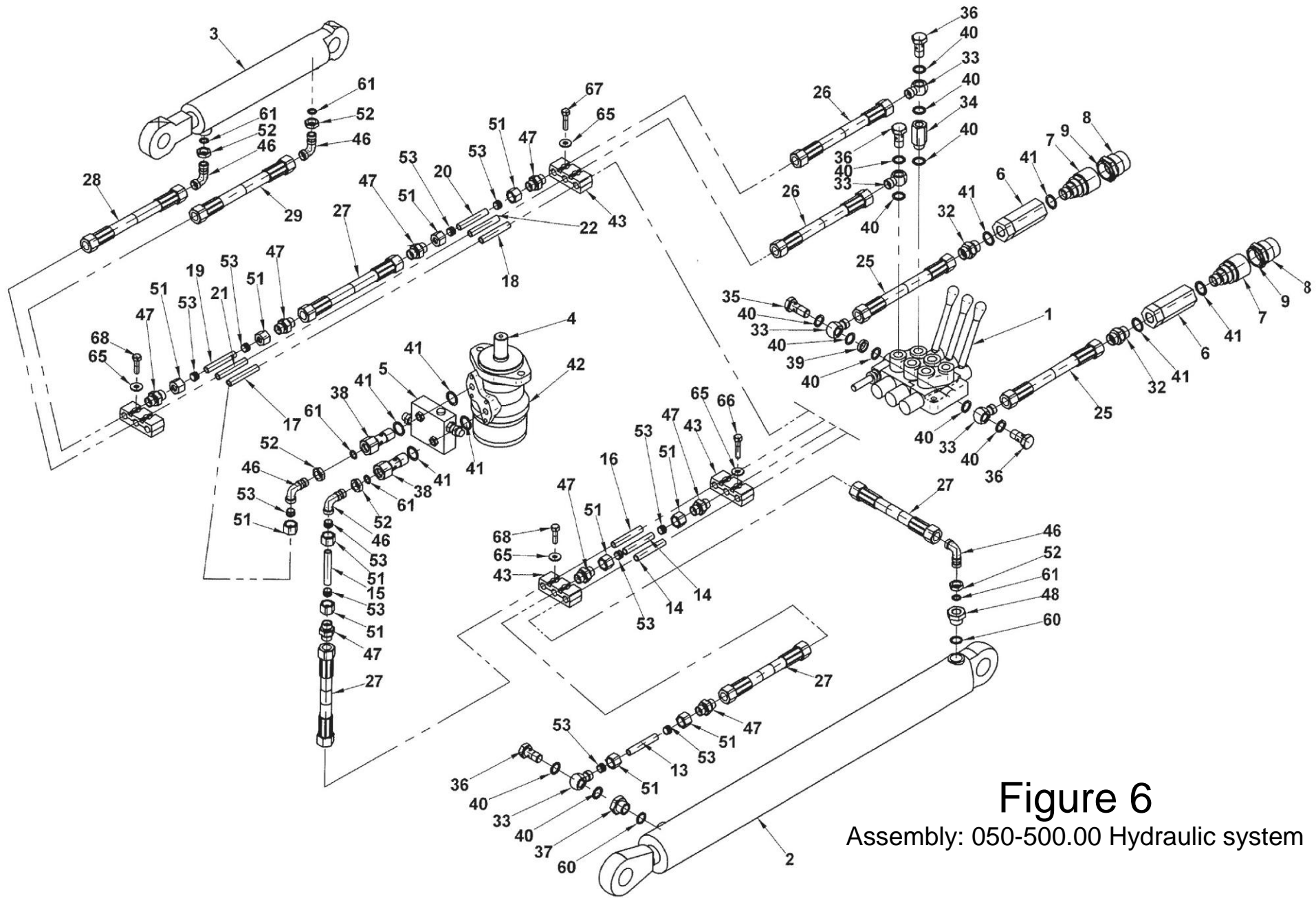


Figure 6

Assembly: 050-500.00 Hydraulic system

Hydraulic system

Figure 6

Number in figure	Figure name or standard name	Part name	Quantity	Product-material code no
1.	Cat. Bondioli Pavesi	3-Section distributor MD3-GZ 160-A1x2-D1x1	1	
2.	5557-000-120.00	Hydraulic piston cylinder CJ2F16-63/36/630 DGz + UE2 63w	1	
3.	Cat. ZEHS LUBAÑ	Hydraulic piston cylinder CJ2F16-50/28/200 z + UE2 50w	1	
4.	PILMET or Danfoss	Hydraulic motor SR200 PILMET or OMR200 Danfoss	1	
5.	1600-0500510.00	Special valve ZP-2-00	1	
6.	5270-120-540.00	Hydraulic filter FH160/16.00-40-G 1/2"	2	
7.	5270-120-550.00	Valve w/ quick coupling ZSR-6-160-13/200-G1/2"	2	
8.		Plug socket ZSR5-160-13/300	2	
9.		Cover ZSR5-160-13/002	2	
10.				
11.				
12.				
13.	5557-050-101.00	Cable 1a – swing frame cylinder	1	
14.	5557-050-102.00	Cable 1b – swing frame cylinder	2	
15.	5557-050-103.00	Cable 2a – motor	1	

Hydraulic system

Figure 6 — continued

Number in figure	Figure name or standard name	Part name	Quantity	Product-material code no
16.	5557-050-104.00	Cable 2b — motor	1	
17.	5557-050-105.00	Cable 3a — motor	1	
18.	5557-050-106.00	Cable 3b — motor	1	
19.	5557-050-107.00	Cable 4a — lug	1	
20.	5557-050-108.00	Cable 4b — lug	1	
21.	5557-050-109.00	Cable 5a — lug	1	
22.	5557-050-110.00	Cable 5b — lug	1	
23.				
24.				
25.	BN-1903-01	Flexible cable AA-10-1600-10/13	2	
26.	BN-1903-01	Flexible cable AA-10-2500-10/10	6	
27.	BN-1903-01	Flexible cable AA-10-500-10/10	6	
28.	BN-1903-01	Flexible cable AA-10-1000-10/10	1	
29.	BN-1903-01	Flexible cable AA-10-800-10/10	1	
30.				
31.				
32.	5270-120-111.00	Coupling 1/2"-M22x 1,5	2	
33.	5270-120-108.00	Eye coupling 3/8"- 45	9	
34.	5281-120-201.00	Distance coupling	3	
35.	5270-120-109.00	Coupling screw 3/8" x 38	1	

Hydraulic system

Figure 6 — continued

Number in figure	Figure name or standard name	Part name	Quantity	Product-material code no
36.	5270-120-110.00	Coupling screw 3/8" x 32	8	
37.	5800-070-110.00	Differential sleeve M22x 3/8"	1	
38.	1600-050-100.01	Special coupling	2	
39.	5270-120-116.00	Spacer	1	
40.	5270-120-118.00	Washer 3/8"	22	
41.	5270-120-119.00	Washer 1/2"	4	
42.	5557-000-199.00	Cylinder collar	1	
43.	5276-120-133.00	Triple clamp	8	
44.				
45.				
46.	PN/M-73142	Elbow coupling body 16-10	5	
47.	PN/M-73141	Straight coupling body 16-10	19	
48.	PN/M-73123	Differential sleeve 16-10	1	
49.				
50.				
51.	PN/M-73139	Nut 16-10	22	
52.	PN/M-73109	Lock nut M16x 1.5	5	
53.	PN/M-73137	Self-locking ring 16-10	22	
54.				

Hydraulic system

Figure 6 – continued

Number in figure	Figure name or standard name	Part name	Quantity	Product-material code no
55.				
56.				
57.				
58.				
59.				
60.	PN/M-86961	Sealing ring 19.3x2.4	2	
61.	PN/M-86961	Sealing ring 13.3x2.4	5	
62.				
63.				
64.				
65.	PN/M-82030	Washer 8.5	8	
66.	PN/M-82101	Screw M8x40	2	
61.	PN/M-82101	Screw M8x35	2	
68.	PN/M-82101	Screw M8x30	4	
69.				
70.				
71.				
72.				
73.				